



County of Lassen
Department of Planning and Building Services

• Planning • Building Permits • Code Enforcement • Surveyor • Surface Mining

July 5, 2018

Maurice L. Anderson, Director
707 Nevada Street, Suite 5
Susanville, CA 96130-3912
Phone: 530 251-8269
Fax: 530 251-8373
email: landuse@co.lassen.ca.us
website: www.co.lassen.ca.us

TO: Interested Parties, Big Valley Groundwater Basin

Zoning & Building
Inspection Requests
Phone: 530 257-5263

FROM: Maurice L. Anderson, Director *BVA for*

SUBJECT: Preparation of a Groundwater Sustainability Plan (GSP) for the Big Valley Groundwater Basin Pursuant to the Sustainable Groundwater Management Act (Water Code Section 10720 et seq).

Background

In September 2014, Governor Jerry Brown signed the Sustainable Groundwater Management Act (SGMA), requiring that groundwater basins throughout the state be managed by local agencies that are responsible for developing Groundwater Sustainability Plans (GSP) if a basin has been designated as medium or high priority by the Department of Water Resources. The Big Valley groundwater basin has been designated as medium priority and therefore must comply with the Sustainable Groundwater Act (SGMA).

As outlined by SGMA, local agencies with the responsibility of managing a basin are referred to as Groundwater Sustainability Agencies (GSA), and can only manage portions of a basin within their jurisdiction. In the Big Valley Basin, Modoc and Lassen Counties are working collaboratively to meet SGMA requirements. Modoc County has filed with the Department of Water Resources (DWR) to be the GSA for the Modoc County portion of the basin, and Lassen County has filed to be the GSA for the Lassen County portion of the basin. Lassen and Modoc GSAs are working together to develop a GSP for the entirety of the basin by January 31, 2022, the deadline for GSP submittal to DWR. Failure to develop a GSP by January 31, 2022 will cause the State Water Resources Control Board (SWRCB) to step in and manage the basin, at a substantially higher cost than local management.

GSPs have a number of components identified by law and regulation. The key goal of a GSP is to identify what sustainable conditions are for the Basin. Sustainable conditions will be based on gathering data, performing studies, and implementing projects to determine if the basin has, or will have in the future, any undesirable results for six sustainability indicators, as required in SGMA. The six sustainability indicators are:

- Chronic lowering of groundwater levels;
- Reduction of groundwater storage;
- Seawater intrusion;
- Water quality degradation;
- Land subsidence; and
- Depletion of interconnected streams.

The Modoc and Lassen GSAs have submitted applications for Proposition 1 grant funding from DWR to offset the bulk of the cost of developing the GSP. This funding has recently been approved and work on the GSP will begin once the state funds become available, as early as August 2018.

Upcoming Activities

To ensure that communication and engagement are a central feature of the process, one of the first actions of the GSAs toward the development of a GSP will be to write Stakeholder Communication and Engagement Plan (C&E Plan). The C&E Plan will contain specific emphasis toward those who have property or live within the Big Valley Basin and those who use groundwater either agriculturally, domestically, or both. The C&E Plan will be made available to all interested parties and will document the process through which the GSAs will receive stakeholder input. This input, at a minimum, will include open meetings held in Big Valley and special public outreach opportunities that the GSAs will host during critical planning phases of the GSP.

How to Participate

Those who wish to be informed and/or involved in activities related to SGMA and groundwater management in Big Valley should join the interested parties list for one or both of the GSAs. People on the interested parties lists are under no obligations, and will receive information about GSP development periodically, including meeting announcements and opportunities to provide input and become more involved. If you would like to be included on the interested parties list for the Big Valley Basin, please visit the GSA websites or contact the counties directly at the phone numbers and email addresses listed below.

- Modoc County - <http://www.co.modoc.ca.us/departments/board-of-supervisors/groundwater-management>

Modoc County at (530) 233-6201 and tiffanymartinez@co.modoc.ca.us

- Lassen County - <http://www.co.lassen.ca.us/dept/planning-and-building-services/sustainable-groundwater-management-act>

Lassen County at (530) 251-8269 and landuse@co.lassen.ca.us

MLA:gfn



HONEY LAKE VALLEY
RESOURCE
CONSERVATION
DISTRICT

globe

PUBLIC NOTICE
Special Meeting of the:

Honey Lake Valley Resource Conservation District
Attachments available 7/20/18 at www.honeylakevalleyrcd.org

Date: Wednesday, July 25, 2018

Location: USDA Service Center
170 Russell Avenue, Suite C
Susanville, Ca. 96130
(530) 257-7271 x100

Time: **3:00 PM (PLEASE NOTE TIME)**

AGENDA

NOTE: THE HONEY LAKE VALLEY RESOURCE CONSERVATION DISTRICT MAY ADVISE ACTION ON ANY OF THE AGENDA ITEMS SHOWN BELOW.

NOTE: IF YOU NEED A DISABILITY-RELATED MODIFICATION OR ACCOMODATION, INCLUDING AUXILIARY AIDS OR SERVICES, TO PARTICIPATE IN THIS MEETING, PLEASE CONTACT THE DISTRICT OFFICE AT THE TELEPHONE NUMBER AND ADDRESS LISTED ABOVE PRIOR TO THE MEETING.

I. CALL TO ORDER. PLEDGE OF ALLEGIANCE. ROLL CALL

II. APPROVAL OF AGENDA

Tie to the Strategic Plan: Strategic Issue 1 – Build HLVRCd leadership & organizational capacity.

III. PUBLIC COMMENT

Per RCD Board Policy No. 5030.4.1, during this portion of the meeting any member of the public is permitted to make a brief statement, express his/her viewpoint, or ask a question regarding matters related to the District. Five (5) minutes may be allotted to each speaker and a maximum of twenty (20) minutes to each subject matter.

IV. CONSENT ITEMS

- A. Approval of 6/27/18 regular meeting minutes (attachment).

Tie to the Strategic Plan: Strategic Issue 1 – Build HLVRCd leadership & organizational capacity.

V. REPORTS

- A. District Manager Report (attachment) – Sims.
B. Correspondence - Sims.
C. NRCS Agency Reports – Peitz.
D. Lassen SWAT – Sims/Tippin.

- E. Buffalo Skedaddle Sage Grouse Working Group – Schroeder.
- F. WAC Report – Langston.
- G. Modoc Regional RCD/CARCD Report – Tippin.
- H. Fire Safe Council Report – Johnson.
- I. IRWMP Report - Claypool
- J. Unagendized reports by board members.

Tie to the Strategic Plan: Strategic Issue 1 – Build HLVRCD leadership & organizational capacity

VI. ITEMS FOR BOARD ACTION AND/OR DISCUSSION – RCD

- A. Consideration and approval of letter of support for Lassen Land and Trails Trust North Diamond Mountain Planning Project (attachment) – Sims.

Tie to the Strategic Plan: Strategic Issue 2 – Stay Relevant to the Conservation Needs of the Community & 3 – Capture Conservation Opportunities, as Appropriate

VII. RECESS OF RCD PORTION OF MEETING

VIII. ITEMS FOR BOARD ACTION AND/OR DISCUSSION- WATERMASTER

- A. Consideration and approval of Resolution 2018-01 adopting the FY 2018-2019 Susan River Service Area Apportionment Assessment and authorizing the Honey Lake Valley Resource Conservation District (HLVRCD) Board Chair to certify the apportionment to the Lassen County Auditor and the Board of Supervisors (attachment) – Otto/Sims

Tie to the Strategic Plan: Strategic Issue 1.4 – Watermaster services are professional provided.

- B. Consideration and approval of Lozano Smith, LLP invoice 1839 for \$464.00 (attachment) - Sims

Tie to the Strategic Plan: Strategic Issue 1.4 – Watermaster services are professional provided.

IX. RECESS OF WATERMASTER PORTION OF MEETING

X. RECONVENE RCD PORTION OF MEETING

XI. ADJOURNMENT

The next Honey Lake Valley RCD meeting will be **August 22, 2018 at 5:30 PM - please note new time.** The location is the USDA Service Center, 170 Russell Avenue, Suite C, Susanville, CA.

I certify that on Friday, July 20, 2018 agendas were posted as required by Government Code Section 54956 and any other applicable law.



Ian Sims
District Manager

gbc

HONEY LAKE VALLEY
RESOURCE CONSERVATION DISTRICT

REGULAR MEETING MINUTES

Date: Wednesday, June 27, 2018

Location: USDA Service Center, 170 Russell Avenue, Suite C, Susanville, CA 96130

Present: Board: Jesse Claypool Wayne Langston
Laurie Tippin
Staff: Ian Sims Merry Wheeler
Attendees: Eric Peitz, NRCS Linda Hanson
Liz Norton

I. CALL TO ORDER, PLEDGE OF ALLEGIANCE, ROLL CALL

Board Chair Jesse Claypool called the meeting to order at 5:35 pm, pledge of allegiance was recited, and quorum was noted. Board Member Will Johnson and Dave Schroeder was absent.

II. APPROVAL OF AGENDA

Ian Sims stated the need to pull item VID and table item VIA and VIIIA.

Board Member Laurie Tippin made a motion to approve the agenda, Board Member Wayne Langston seconded and the motion passed with incorporated changes. All.

III. PUBLIC COMMENT

Per RCD Board Policy No. 5030.4.1, during this portion of the meeting any member of the public is permitted to make a brief statement, express his/her viewpoint, or ask a question regarding matters related to the District. Five (5) minutes may be allotted to each speaker and a maximum of twenty (20) minutes to each subject matter.

Linda Hanson from Lassen Land and Trails Trust explained why item VID needed to be pulled as the LLTT Board has chose not to pursue this project at this time.

IV. CONSENT ITEMS

A. Approval of 5/23/18 regular meeting minutes.

B. Approval of May/June 2018 Treasurer's Report.

Wayne Langston made a motion to approve the consent items, Laurie Tippin seconded, and the motion passed. All.

V. REPORTS

A. District Manager Report – Sims.

B. Correspondence – Wheeler.

C. NRCS Agency Report – Peitz.

D. Lassen SWAT – Tippin/Sims.

E. Buffalo Skedaddle-Sage Grouse Working Group – Schroeder.

- F. **WAC Report – Langston.**
- G. **Modoc Regional RCD/CARCD Report – Tippin.**
- H. **Fire Safe Council Report – Johnson.**
- I. **IRWMP Report – Claypool.**
- J. **Unagendized Reports by Board Members.**

VI. ITEMS FOR BOARD ACTION AND/OR DISCUSSION – RCD

- A. **Consideration and approval of Resolution 2018-02 to have Directors of the Honey Lake Valley RCD appointed by the Board of Supervisor of Lassen County in lieu of election (attachment) – Sims**

This item was tabled until August's Meeting. 4/5th's Board representation needed to pass resolution. Sims will look into the necessary deadline prompted by the Lassen County Counsel.
- B. **Consideration and approval of letter to Tri-Counties Bank requesting change in signatory Board members and staff on the following bank accounts (attachment) – Sims.**

Laurie Tippin made a motion to approve item VIB, Wayne Langston seconded, and motion passed. All.
- C. **Consideration and approval to file CEQA Notice of Exemption for Lassen Land and Trails Trust (LLTT) Bizz Johnson Trail Restoration Project (attachment) – Sims.**

Liz Norton and Linda Hanson with LLTT, thanked the RCD for processing the Bizz Johnson Trail Restoration Project CEQA NOE. Wayne Langston made a motion to approve item VIC, Laurie Tippin seconded, and motion passed. All.
- D. **Consideration and approval of Lassen Land and Trails Trust (LLTT) letter of support for National Park Service's Rivers, Trails and Conservation Assistance (RTCA) Program (attachment) - Sims.**

Item pulled, see item II and III.

VII. RECESS OF RCD PORTION OF MEETING

Per Government Code 54952.3, the RCD portion of the meeting was recessed in order for the WM Board to convene.

VIII. ITEMS FOR BOARD ACTION AND/OR DISCUSSION - WATERMASTER

- A. **Consideration and approval of Resolution 2018-01 adopting the FY 2018-2019 Susan River Service Area Apportionment and authorizing the Honey Lake Valley Resource Conservation District (HLVRCD) Board Chairman to certify the apportionment to the Lassen County Auditor and the Board of Supervisors (attachment) – Sims/Otto.**

Item tabled as Watermaster is currently working with the Lassen County Assessor's Office to ensure correctness with a few users who have either sold water rights or irrigated land within the last year.

IX. RECESS OF WM PORTION OF MEETING

X. RECONVENE RCD PORTION OF MEETING

XI. ADJOURNMENT

Wayne Langston made a motion to adjourn the meeting, Laurie Tippin seconded and the meeting was adjourned at 6:30 PM. All.

The next scheduled Honey Lake Valley RCD meeting is **Wednesday, July 25, 2018** at **5:30 pm** at the USDA Service Center, 170 Russell Avenue, Suite C, Susanville, CA 96130.

Respectfully submitted,

A handwritten signature in black ink, appearing to read 'Ian Sims', written in a cursive style.

Ian Sims
District Manager

APPROVED: _____
Jesse Claypool, RCD Board Chairperson

DATE: July 25, 2018

960d

AGENDA

Public Meeting
Central Valley Regional
Water Quality Control Board



BOARD MEETING

Thursday, August 2 – 9:00 a.m.
Central Valley Water Board
11020 Sun Center Drive, Suite 200
Rancho Cordova, CA 95670

THIS MEETING WILL BE WEBCAST

The Central Valley Board strives to conduct accessible, orderly, and fair meetings. The Board abides by the following rules when conducting its meetings:

- No person is required to register their name or provide other information to the Board in order to attend a Board meeting. Completing an attendance card is voluntary, unless you wish to testify before the Board.
- Anyone speaking to the Board will be requested to complete an attendance card.
- Anyone testifying in permit and enforcement actions will be required to complete an attendance card and affirm that any testimony that they provide is the truth by taking an oath.
- Items on this Agenda are numbered for identification purposes only; the Board may consider these items out of their listed order.
- Any item scheduled for the first day of a multi-day Board meeting may be delayed or continued to the next day, and items may also be moved from the second day to the first day. The Board may remove items from this Agenda without prior notice.
- If the Board lacks a quorum, the Board may conduct a hearing as a Panel Hearing. However, the Board will not take final action on such an item until a quorum of the Board is present.

Copies of the items to be considered by the Central Valley Water Board are posted on the Board's website at:
http://www.waterboards.ca.gov/centralvalley/board_decisions/tentative_orders/

Board agendas and the minutes of prior meetings are posted on the Board's website at:
http://www.waterboards.ca.gov/centralvalley/board_info/meetings/

Questions regarding individual items should be directed to the Board staff person whose name and phone number are indicated with the agenda item. If no staff person is listed, or for general questions, please contact Ms. Kiran Lanfranchi-Rizzardi at (916) 464-4839 or klanfranchi@waterboards.ca.gov

The Board meeting will be conducted at a facility that is accessible to people with disabilities. Individuals requiring special accommodations are asked to contact Ms. Lanfranchi-Rizzardi at (916) 464-4839 at least 5 working days prior to the meeting. TTY users may contact the California Relay Service at 1-800-735-2929 or voice line at 1-800-735-2922.

A list of applications for Water Quality Certifications, which the Board issues pursuant to Section 401 of the Clean Water Act, can be found at: http://www.waterboards.ca.gov/centralvalley/public_notices/ or can be obtained by calling the Board at: (916) 464-3291.

ELECTRONIC PRESENTATIONS

PowerPoint and other electronic presentations are frequently presented at the Board Meetings. Please e-mail presentations to the Board's Webmaster at webmaster5@waterboards.ca.gov at least 24 hours in advance, or bring your files either on a USB Flash Drive or CD-ROM and give them to Board Staff prior to the start of the meeting.

THURSDAY, AUGUST 2, 2018 9:00 A.M.

1. Introductions, Pledge of Allegiance
2. Meeting Rules and Procedures
3. Board Member Communications – Board Members and the State Board Liaison Member may discuss meetings, communications, correspondence, or other items of general interest relating to matters within the Board's jurisdiction. There will be no voting or formal action taken
4. Public Forum – Any member of the public may address the Board on any matter within the Board's jurisdiction and not scheduled for consideration at this meeting, or pending before the Board
5. State Board Liaison Update
6. Executive Officer's Report (http://www.waterboards.ca.gov/centralvalley/board_info/exec_officer_reports/)
(a) "Fiscal Yearend Water Board Program Performance Report"
7. The Board will be asked to approve agenda items 11 through 14 if no one is present to contest them
8. **OTHER BUSINESS**
Consideration of Resolution Delegating Powers and Duties to the Executive Officer
9. **NPDES PERMITS**
Sacramento Regional County Sanitation District, Sacramento Regional Wastewater Treatment Plant, Sacramento County – *Consideration of an Order Amending Waste Discharge Requirements Order R5-2016-0020 (NPDES Permit CA0077682) [Xuan Luo (916) 464-4606]*
10. **PLANNING**
Delta Nutrient Research Plan – Consideration of Resolution Approving the Plan and Directing Staff to Implement the Plan [Janis Cooke (916) 464-4672]

UNCONTESTED CALENDAR

(Cal. Code Regs., tit. 23, § 647.2, subd. (f).)

Uncontested items are those items that are not being contested at the Board Meeting and will be acted on without discussion. If any person or Board Member requests discussion, the item may be removed from the Uncontested Calendar

11. LOCAL AREA MANAGEMENT PLANS (LAMPS)

Sierra County Environmental Health Department, Sierra County - *Consideration of Resolution to Approve Local Agency Management Program*

12. WASTE DISCHARGE REQUIREMENTS AND ENFORCEMENT

- a. California Department of Transportation, Lake 29 Improvement Project – Segment 2C, Lake County, (New)
- b. Calaveras County Water District, La Contenta Wastewater Treatment Facility, Calaveras County, WDRs Order R5-2013-0133 (Amendment)
- c. Langer Farms LLC, Fruit Juicing Facility, Kern County (New)
- d. Lion Raisins, Inc., Selma Raisin Packing Facility, Fresno County, Order 5-00-094 (Revised)
- e. Sierra County Service Area No. 5 Zone 5A (Sierra Brooks), Sierra County, Consideration of a Resolution Allowing an Exemption for an Engineered Residential Wastewater Disposal System Under Waste Discharge Requirements Order 85-039 (New)
- f. Treehouse California Almonds, LLC, Earlimart Almond Plant, Tulare County, Order 97-243 (Revised)

13. WASTE DISCHARGE REQUIREMENTS/NPDES PERMITS/TIME SCHEDULE ORDER RESCISSIONS

- a. Butte County, Rocky Bluffs & Skansen, CSA No. 21, Order 92-211
- b. Butte County, Stirling City, CSA No. 82, Order 96-048
- c. Calaveras County Water District, Wallace Lake Estates, Calaveras County, Order R5-2003-0101
- d. Caritas Acquisitions I, LLC; Castle City Mobile Home Park, Placer County, Order 98-049
- e. City of Visalia, Water Conservation Plant, Tulare County, Order R5-2014-0076 (NPDES Permit CA0079189) and Time Schedule Order R5-2014-0077
- f. San Joaquin County Department of Public Works, Linne Estates, San Joaquin County, Order R5-2004-0078
- g. United States Department of the Interior, Bureau of Reclamation, Administrative Center and Oak Shore Recreation Center, Napa County, Order 5-00-202

14. CHANGE OF NAME AND OR/OWNERSHIP

- a. Former Holly Sugar Plant, Butte County, Waste Discharge Requirements Order 5-00-184
- b. Maybelle Timm Eley, Timm Mine, El Dorado County, Order R5-2014-0108
- c. Mountain Oaks Properties, Butte County CSA No. 141, Butte County, Order 2014-0153-DWQ-R5222
- d. Foothills Mobile Home Park, Butte County, Order 2014-0153-DWQ-R5226

CLOSED SESSION

The Board may meet in closed session to consider personnel matters (Gov. Code, § 11126 subd. (a)), to deliberate on a decision to be reached based upon evidence introduced in a hearing (Gov. Code § 11126, subd. (c)(3)), or to discuss matters in litigation, including discussion of initiated litigation, significant exposure to litigation, or decisions to initiate litigation (Gov. Code, § 11126, subd. (e)). Current litigation involving the Board:

Litigation filed against the Central Valley Water Board and/or the State Water Board:

- a. Cleanup and Abatement Order Issued for the Cleanup of Dixon Park in 2005 – *ConAgra Foods and Monfort, Inc. v. Central Valley Water Board* (Solano County Sup. Ct., Case No. FCS027420)
- b. Administrative Civil Liability Orders R5-2011-0068, R5-2012-0070, R5-2013-0091, R5-2014-0119, R5-2015-0065, R5-2016-0063, and R5-2017-0038, Cease and Desist Order R5-2017-0039, General Order R5-2013-0122, and 13267 Order Requiring Monitoring of the Sweeney Dairy – *James G. Sweeney, et al. v. State Water Board, et al.* (Fresno County Sup. Ct. Case Nos. 15CECG02063, 17CECG00146, 16CECG03035, 17CECG03030, and 17CECG02994)
- c. Administrative Civil Liability Order Issued for Mandatory Minimum Penalties to Malaga County Water District in 2013 – *Malaga County Water District v. Central Valley Water Board et al.* (5th Dist. Ct. of App., Case No. F075868; Fresno County Sup. Ct., Case No. 14-CECG-03576, removed to Madera County Sup. Ct., Case No. MCV071280)
- d. Dairy General Waste Discharge Requirements, Reissued in 2013 – *Asociación de Gente Unida por el Agua et al. v. Central Valley Water Board* (3rd Dist. Ct. of App., Case No. C066410; Sacramento County Sup. Ct., Case No. 34-2008-00003604)
- e. Cleanup and Abatement Order Issued for Cleanup of Walker Mine in 2014 – *Atlantic Richfield Company v. Central Valley Water Board* (Sacramento County Sup. Ct., Case No. 34-2014-80001875)
- f. NPDES Permit and Cease and Desist Order Issued to Malaga County Water District in 2014 – *Malaga County Water District v. State Water Resources Control Board, et al.* (5th Dist. Ct. of App., Case No. F075851; Fresno County Sup. Ct., Case No. 14-CECG-03919, removed to Madera County Sup. Ct., Case No. MCV071279)
- g. Administrative Civil Liability Order Issued to Malaga County Water District in 2016 – *Malaga County Water District v. Central Valley Regional Water Quality Board, et al.* (Fresno County Sup. Ct., Case No. 16-CECG-03036)
- h. Eastern San Joaquin/Irrigated Lands Regulatory Program—State Water Board Order No. WQ 2018-0002, modifying Central Valley Regional Water Quality Control Board Waste Discharge Requirements General Order No. R5-2012-0116 (Growers within Eastern San Joaquin River Watershed that are Members of Third-Party Group) [State Water Board File Nos. A-2239(a)-(c)]:
 - (1) *Monterey Coastkeeper, et al. v. Central Coast Reg'l Water Quality Control Bd., et al.*, Sacramento Cnty. Sup. Ct. Case No. 34-2017-80002655;
 - (2) *Environmental Law Found. v. State Water Res. Control Bd., et al.*, Sacramento Cnty. Sup. Ct. Case No. 34-2018-80002851;
 - (3) *Protectores del Agua Subterránea v. State Water Res. Control Bd., et al.*, Sacramento Cnty. Sup. Ct. Case No. 34-2018-80002852;
 - (4) *Monterey Coastkeeper, et al. v. Central Valley Reg'l Water Quality Control Bd., et al.*, Sacramento Cnty. Sup. Ct. Case No. 34-2018-80002853.

Litigation filed by the Central Valley Water Board against other parties:

- i. Aerojet Cleanup – Central Valley Water Board et al. v. Aerojet-General Corp. et al. (Sacramento County Sup. Ct., Case No. 286073, consolidated with Case Nos. 288302 and 291981); Central Valley Water Board et al. v. Aerojet-General Corp. et al. (EDCal, Case No. CIV-S-86-0064-EJG) consolidated with U.S. v. Aerojet-General Corp. et al., (EDCal, Case No. CIV-S-86-0063-EJG)
- j. Bonzi Landfill – Central Valley Water Board v. Ma-Ru Holding Company et al. (Stanislaus County Sup. Ct., Case No. 643740)
- k. Orland Sand and Gravel Facility – People ex rel. Central Valley Water Board, Dept. of Fish and Wildlife v. Orland Sand and Gravel Corp. et al. (Glenn County Sup. Ct., Case No. 15CV01436)
- l. Greener Globe Landfill – People ex rel. Central Valley Water Board v. A Greener Globe Corporation (Placer County Sup. Ct., Case No. SCV13231)

Petitions for Review of Central Valley Water Board Actions filed with State Water Board:

- m. Irrigated Lands General Waste Discharge Requirements for Individual Growers, Order R5-2013-0100 – Petition filed by Kern River Watershed Coalition Authority and Paramount Farming Company, LLC (State Water Board File No. A-2269)
- n. Tulare Lake Basin Area Irrigated Lands General Waste Discharge Requirements, Order R5-2013-0120 – Petitions filed by Southern San Joaquin Valley Water Quality Coalition et al., Michael and Yvonne LaSalle, and Asociación de Gente Unida por el Agua (AGUA) et al. (State Water Board File Nos. A-2278(a) through (c))
- o. City of Stockton, WDRs Order R5-2014-0070 [NPDES No. CA0079138] and Time Schedule Order R5-2014-0071 (State Water Board File No. A-2315)
- p. Sacramento River Watershed Irrigated Lands General Waste Discharge Requirements, Order R5-2014-0030 – Petition filed by California Sportfishing Alliance et al. (State Water Board File No. A-2302)
- q. San Joaquin County and Delta Area Irrigated Lands General Waste Discharge Requirements, Order R5-2014-0029 – Petition filed by California Sportfishing Alliance et al. (State Water Board File No. A-2301)
- r. West San Joaquin River Watershed Irrigated Lands General Waste Discharge Requirements, Order R5-2014-0002 – Petition filed by California Sportfishing Alliance et al. (State Water Board File No. A-2292)
- s. Valley Water Management Company, Cease and Desist Order R5-2015-0093 – Petitions filed by Valley Water Management Company, Clean Water Action, and the Central California Environmental Justice Network (State Water Board File Nos. A-2148(a), A-2148(b), and A-2148(c))
- t. CMC Land Holdings, LLC, ACL Order R5-2016-0084 – Petition filed by CMC Land Holdings, LLC (State Water Board File No. A-2517)
- u. 13267 Order Directing Participation in the Delta Regional Monitoring Program – Petitions filed by the Cities of Ceres, Patterson, Turlock, Ripon, and Riverbank and by the Counties of Stanislaus and Colusa (State Water Board File Nos. A-2540(a) through (g))
- v. Waste Discharge Requirements for Municipal Wastewater Dischargers, Order No. R5-2017-0085 – Petition filed by Friends of the North Fork (State Water Board File No. A-2573)
- w. Original Sixteen to One Mine, Inc., ACL Order R5-2017-0115 – Petition filed by Original Sixteen to One Mine, Inc. (State Water Board File No. A-2586)

MEETING PROCEDURES

The Central Valley Water Board circulates item-specific Notices and/or Hearing Procedures along with drafts of its Orders and Amendments. If there is a conflict between an item-specific Notice or Hearing Procedure and the Meeting Procedures in this Agenda, the item-specific Notice or Hearing Procedure will control. Please contact Board staff if you do not know whether there is a Notice or Hearing Procedure for a specific item.

The statutes and regulations that govern the Central Valley Water Board's meetings can be found at http://www.waterboards.ca.gov/laws_regulations/

All persons may speak at a Central Valley Water Board meeting, and are expected to orally summarize their written submittals. Oral presentations will be limited in time by the Board Chair, and a timer may be used. Where speakers can be grouped by affiliation or interest, such groups are expected to select a spokesperson and to not be repetitive. The Board will accommodate spokespersons by granting additional time if other group members will not also be speaking.

Written materials that are received after deadlines set by item-specific Notices and/or Hearing Procedures will not generally be admitted. Any person requesting to submit late materials must demonstrate good cause, and the Chair must find that the admission of the late materials would not prejudice the Central Valley Water Board or any designated party. The Chair may modify this rule to avoid severe hardship.

PROCEDURE FOR HEARINGS IN ADJUDICATIVE MATTERS

(Including the issuance of Waste Discharge Requirements, NPDES Permits, Conditional Waivers, and certain Enforcement Orders, including Cleanup and Abatement and Administrative Civil Liability Orders)

The regulations for adjudicative proceedings are found in California Code of Regulations, title 23, sections 648 et seq. An adjudicative proceeding is a hearing to receive evidence for the determination of facts pursuant to which the Board formulates and issues a decision.

Evidence: Adjudicative hearings are not conducted according to the technical rules of evidence; the Board will accept any evidence that is reasonably relevant. It is the policy of the Board to discourage the introduction of surprise testimony and exhibits. Hearsay evidence may be used to supplement or explain other evidence.

Designated Parties: Designated Parties are persons named in a proposed order, anyone who requests designated party status and is so designated by the Board, and, for prosecutorial matters, the Board's Prosecution Team. Designated Parties have the right to call and examine witnesses, receive witness lists from other Designated Parties, introduce exhibits, cross-examine opposing witnesses, rebut evidence, make or oppose evidentiary objections, and make opening and/or closing statements.

Interested Persons: All persons who wish to participate in the hearing but who are not Designated Parties are Interested Persons. Interested Persons may present non-evidentiary policy statements or comments, either orally or in writing, but will not be subject to cross-examination. Interested Parties may be asked to respond to clarifying questions from the Board, staff, or others.

Order of Proceeding: for adjudicative hearings, the proceeding will be generally be conducted in the following order, unless modified by the Board Chair or specified differently in an item-specific Notice or Hearing Procedure:

- Testimony by Board staff, followed by testimony by Designated Parties named in the Order or Permit, followed by testimony of other Designated Parties
- Cross-examination of Board staff, followed by cross-examination of Designated Parties named in the Order or Permit, followed by cross-examination of other Designated Parties
- Statements of Interested Persons
- Closing statement by Designated Parties other than those named in the Order or Permit, then closing statement by Designated Parties named in the Order or Permit, followed by closing statement by Board staff
- Recommendation by the Board's Executive Officer (as appropriate)
- Close of the Hearing, followed by deliberation and voting by the Board

Closing statements are not to be used to introduce new evidence or testimony. Persons wishing to introduce exhibits (i.e., maps, charts, photographs) must leave them with the Board.

PROCEDURE FOR RULEMAKING AND INFORMATIONAL PROCEEDINGS

(Including Basin Planning, Rulemaking, Setting of Policy, and Workshops)

The regulations for rulemaking and informational proceedings are found in California Code of Regulations, title 23, sections 649 et seq. Rulemaking proceedings include hearings designed for the adoption, amendment, or repeal of any rule, regulation, or standard of general application. Informational proceedings include any hearings designed to gather and assess facts, opinions, and other information relevant to any matters within the jurisdiction of the Boards and whose primary purposes are to assist the Boards in the formulation of policy or guidelines for future Board action, to inform the public of Board policies, reports, orders, plans, or findings, and to obtain public comment and opinion with respect to such policies, reports, orders, plans, or findings, or to adopt such policies, reports, orders plans, or findings.

For rulemaking and informational proceedings, the Board does not distinguish between Designated Parties and Interested Persons; the Board will accept any evidence that is reasonably relevant, provided that it is submitted in accordance with any item-specific Notice or Hearing Procedure.

Order of Proceeding: for rulemaking and informational proceedings, the proceeding will be generally be conducted in the following order, unless modified by the Board Chair or specified differently in an item-specific Notice or Hearing Procedure:

- Opening statement by the Board summarizing the subject matter and purpose of the proceeding
- Presentation by Board staff
- Presentations by all other persons
- Recommendation by the Board's Executive Officer (as appropriate)
- Close of the Hearing, followed by deliberation and voting by the Board (as appropriate)

PETITION PROCEDURE

Any person aggrieved by an action of the Central Valley Water Board may petition the State Water Board to review the action in accordance with Water Code section 13320 and California Code of Regulations, title 23, sections 2050 and following. The State Water Board must receive the petition by 5:00 p.m., 30 days after the date of the issuance of the Order, except that if the thirtieth day following the issuance of the Order falls on a Saturday, Sunday, or state holiday, the petition must be received by the State Water Board by 5:00 p.m. on the next business day. Copies of the law and regulations applicable to filing petitions may be found at:

http://www.waterboards.ca.gov/public_notices/petitions/water_quality

or will be provided upon request.

**CALIFORNIA REGIONAL WATER QUALITY CONTROL BOARD
CENTRAL VALLEY REGION**

The primary duty of the Central Valley Water Board is to protect the quality of the waters within the Central Valley Region for all beneficial uses. This duty is implemented by formulating and adopting water quality plans for specific ground or surface water basins and by prescribing and enforcing requirements on all agricultural, domestic, and industrial waste discharges. Specific responsibilities and procedures of the Boards and the State Water Resources Control Board are contained in the Porter-Cologne Water Quality Control Act.

CITY OF	BOARD MEMBERS	RESIDENCE	TERM EXPIRES
	Jon Costantino	Grass Valley	9/30/2019
	Carmen L. Ramirez*	Atwater	9/30/2021
	Karl E. Longley	Fresno	9/30/2021
	Robert Schneider	Davis	9/30/2018
	Denise Kadara	Allensworth	9/30/2018
	Raji Brar	Bakersfield	9/30/2020
	Daniel B. Marcum	Fall River Mills	9/30/2019

*Public member in accordance with Water Code section 13201(c)

Patrick Pulupa, **Executive Officer**
Kiran Lanfranchi-Rizzardi, **Administrative Assistant II/Clerk to the Board**
Jessica Jahr, **Attorney III**
David Lancaster **Attorney I**
Bayley Toft-Dupuy-**Attorney I**

SACRAMENTO OFFICE

11020 Sun Center Drive, Suite 200
Rancho Cordova, CA 95670-6114

Assistant Executive Officers:

Bracamonte, Linda
Altevogt, Andrew
Laputz, Adam

Supervisors:

Black, Stewart
Braidman, Brett
Busby, Robert
Chilcott, Jeanne
Chow, Bob
Garver, Kelli
Marshall, Jim
McConnell, Sue
Newman, Brian
Sellards, Kim

Seniors:

Armstrong, Scott
Ditto, Robert
Djuth, Gerald
Herbst, Charlene
Hold, Howard
Holmes, Kari
LaBay, Jennifer
Littlejohn, Anne
McClure, Danny
McCrink, Marie
Meeks, Steven
Mello, Joe
Morris, Patrick
Palmer, Josh
Rosenbaum, Steve
Shelton, Brad
Tadlock, Stephanie

FRESNO OFFICE

1685 E Street
Fresno, CA 93706

Assistant Executive Officer:

Clay Rodgers

Supervisors:

Hatton, Scott
Harvey, Dale
Patteson, Doug

Seniors:

Carlson, Daniel
Cregan, Alan
Essary, Dale
Gray, Shelton
Gross, Warren
Holcomb, Ron
Mushegan, Alex
Pfister, Mike
Scroggins, Matt
Sholes, David
Walls, Russell

REDDING OFFICE

364 Knollcrest Drive, Suite 205
Redding, CA 96002

Assistant Executive Officer:

Clint Snyder

Supervisors:

Smith, Bryan
Wilson, Angela

Seniors:

Betancourt, Elizabeth
Burger, Kate
Coster, Lynn
Low, George
Pagan, Jeremy
Perea, Griffin

gbc

LASSEN COUNTY
TECHNICAL ADVISORY COMMITTEE AGENDA
SECOND FLOOR CONFERENCE ROOM
707 NEVADA STREET
SUSANVILLE, CA 96130
THURSDAY AUGUST 2, 2018

9:00 a.m. Convene in Regular Session
Matters Initiated by the General Public

PARCEL MAP #2018-004, Daniel and Mary Egan Revocable Trust, proposal to divide a single 112.5 acre parcel into one parcel and a remainder pursuant to Lassen County Code Section 18.108.250 (Segregation of Homesites in Agricultural Zones); Resultant Parcel A ("homesite" parcel) is 10.12 acres (as shown on the tentative parcel map) and the remainder is 102.38 acres. The parcels are zoned U-C-2-A-P (Upland Conservation/Resource Management District, Agricultural Preserve Combining District) and have a land use designation of "Intensive Agriculture" pursuant to the *Lassen County General Plan, 2000* and the *Janesville Planning Area Amendments, 1993*. The project is exempt from the California Environmental Quality Act (CEQA) under Section 15300.4 of the Guidelines under a local categorical exemption. The parcel is located at 465-575 Elysian Creek Way in Janesville CA, approximately 1.5 miles northwest of Wingfield Road North. APNS(S): 129-020-59, 129-020-78, 129-020-79, 129-020-80. Staff Contact: Kelly Mumper, Assistant Planner.

ADJOURN

Distribution:		Agendas Only:	
County Planning & Building Services	County Fire Warden's Office	Applicants/Agents	BOS
County Environmental Health Dept.	County Assessor's Office	County Clerk	County Counsel
County Road Dept.	County Surveyor	Treasurer/Tax Collector	Post
CAO			

Lassen County Planning and Building Services 530-251-8269

MM
KM TAC/AGENDA 8/2/18
MLA: aje



TENTATIVE PARCEL MAP/SUBDIVISION APPLICATION

RECEIVED

FILING FEE: \$754 PARCEL MAP; \$913 AND \$56 PER LOT SUBDIVISION

DEPARTMENT OF PLANNING AND BUILDING SERVICES

707 Nevada Street, Suite 5 · Susanville, CA 96130-3912

(530) 251-8269 · (530) 251-8373 (fax)

www.co.lassen.ca.us

Lassen County Department of
Planning and Building Services

Form must be typed or printed clearly in black or blue ink.

All sections must be completed in full. Only attach additional sheets if necessary.

FILE NO. PM #2018-004


Property Owner/s		Property Owner/s	
Name: <u>Egan et al</u>	<u>Don't send</u>	Name:	
Mailing Address: <u>707-885 Wingfield Rd E.</u>		Mailing Address:	
City, ST, Zip: <u>Jonesville CA 96114</u>		City, ST, Zip:	
Telephone: <u>530-249-3426</u>	Fax: <u>257 7780</u>	Telephone:	Fax:
Email: <u>joeegan67@hotmail.com</u>		Email:	

Applicant/Authorized Representative* <u>Only send to "Joe"</u>	Agent (Land Surveyor/Engineer/Consultant)
Same as above: <input type="checkbox"/>	Correspondence also sent to: <input type="checkbox"/>
Name: <u>Joe Egan</u>	Name:
Mailing Address: <u>707-885 Wingfield Rd E.</u>	Mailing Address:
City, ST, Zip: <u>Jonesville CA 96114</u>	City, ST, Zip:
Telephone: <u>530 249 3426</u>	Fax:
Email:	License #:

Project Address or Specific Location: <u>465-575 Elysian Creek Way</u>	
Deed Reference: Book:	Page:
Zoning: <u>UC 2</u>	General Plan Designation: <u>#1, 2, 3, 4</u>
Parcel Size (acreage): <u>10</u>	Section: <u>28N</u> Township: <u>12E</u> Range:

Assessor's Parcel Number(s):	<u>129 - 020 - 59</u>	<u>129 - 020 - 78 779</u>	<u>129 - 020 - 80</u>
-------------------------------------	-----------------------	---------------------------	-----------------------

<input type="checkbox"/> Subdivision (5 or more parcels created)	
Number of Parcels: _____	Parcel Size Range: _____ (acres or square feet). Use: _____
<input checked="" type="checkbox"/> Parcel Map (4 or fewer parcels created).	
Parcel No. <u>1</u>	Size: <u>10.12</u> (acres or square feet). Uses: <u>Home site</u>
Parcel No. <u>Remainder</u>	Size: <u>102.38</u> (acres or square feet). Uses: <u>Ag</u>
Parcel No. _____	Size: _____ (acres or square feet). Uses: _____
Parcel No. _____	Size: _____ (acres or square feet). Uses: _____

SIGNATURE OF PROPERTY OWNER(S): I HEREBY ACKNOWLEDGE THAT: I have read this application and state that the information given is both true and correct to the best of my knowledge. I agree to comply with all County ordinances and State laws concerning this application. 	*SIGNATURE OF APPLICANT/AUTHORIZED REPRESENTATIVE (Representative may sign application on behalf of the property owner only if Letter of Authorization from the owner/s is provided). Date: <u>7-6-17</u> Date: _____
---	--

See associated process form for required attachments.

1. Multiple (secondary) access provided for emergency fire equipment and shown on the Tentative Map:
☒ Yes ☐ No. Explain reason for lack of multiple access (e.g. parcels over forty acres, parcels front a publicly maintained road, etc.; see Lassen County Code Section 9.16.102): _____

on Elyria Valley Rd & Indian Rd.

2. Proposed Water Source: ☐ Public System ☒ Private System

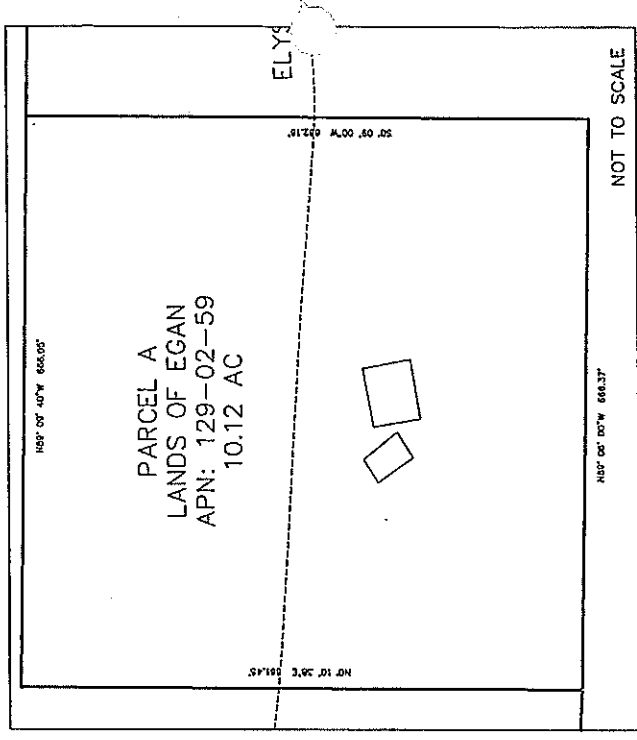
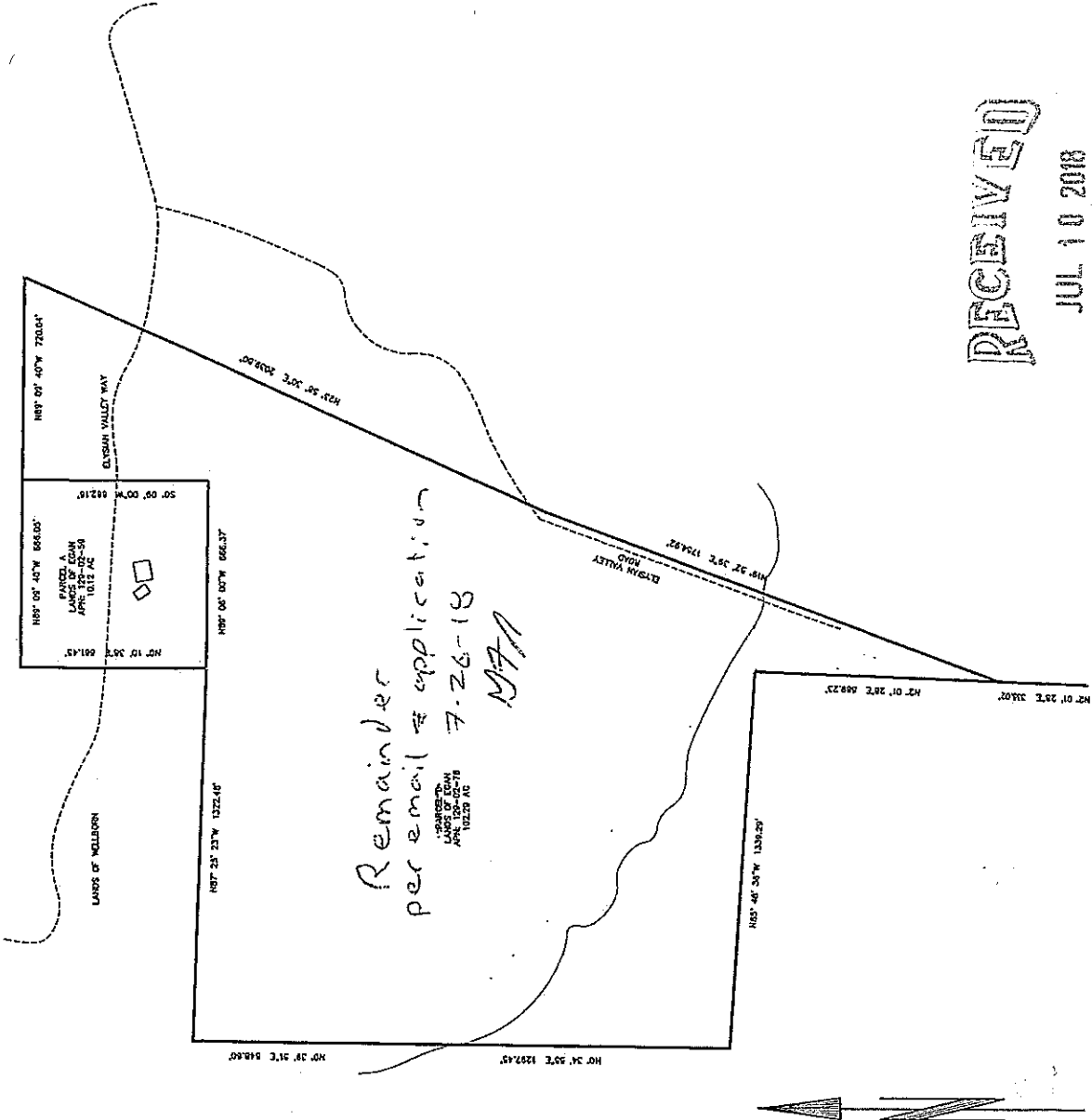
Explain _____

3. Method of Sewage Disposal: ☐ Public System ☒ Private System

Explain _____

4. List All Recorded Access and Utility Easements: On Record

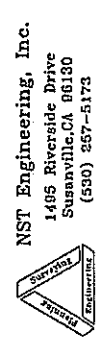
5. Does the Owner Own Other Land Near the Project Site? ☐ No ☒ Yes APN(s) _____



TENTATIVE PARCEL MAP DANIEL AND MARY EGAN REVOCABLE TRUST

IN SECTION 1, 2, 12, T.28 N., R.12 E, MD8&M
LASSEN COUNTY, CALIFORNIA

SCALE: 1" = 400'



RECEIVED

JUL 10 2018

Lassen County Department of
Planning and Building Services

Kelly Mumper

From: Gaylon Norwood
Sent: Friday, July 27, 2018 1:38 PM
To: Don Willis; Kelly Mumper
Subject: FW: Parcel Map

We clarify the preceding at TAC.

From: Egan, Joe [mailto:joe.egan@PlumasBank.com]
Sent: Friday, July 27, 2018 1:35 PM
To: Gaylon Norwood <GNorwood@co.lassen.ca.us>
Subject: RE: Parcel Map

That sounds fine to exclude 129-020-80 from the application.

Thank You

*Joe Egan, SVP/Manager Agricultural Services
3000 Riverside Drive, Susanville, CA 96130
(o) 530-257-5013 ext 1816 (c) 530-249-3426*

Please send secure email to the address below:

<http://dropbox.yousendit.com/AGLending9292102>

From: Gaylon Norwood <GNorwood@co.lassen.ca.us>
Sent: Friday, July 27, 2018 12:02 PM
To: Egan, Joe <joe.egan@PlumasBank.com>
Cc: Richard Egan <r_hegan@frontiernet.net>; Maurice Anderson <MAAnderson@co.lassen.ca.us>; Don Willis <DWillis@co.lassen.ca.us>; Kelly Mumper <kmumper@co.lassen.ca.us>
Subject: RE: Parcel Map

WARNING: This email came from an external source. Do not open attachments or click links of unknown or suspicious origin.

Joe:

I would like to clarify one final point.

Your application lists APN 129-020-80 as one of the involved parcels with this segregation of homesite. APN 129-020-80 is the more eastern, larger 308 acre parcel. I do not believe you intend (or need) to include this parcel to create the segregated parcel you are proposing (the segregated parcel you propose is APN 129-020-59). Your tentative map shows only the parcel to the west (comprised of 3 APNs: 129-020-59, 78, and 79). This one legal parcel is large enough on its own to meet the acreage requirements for a segregation of homesite. APN 129-020-80 is not shown on your Tentative Map as being involved.

You do not need to associate APN 129-020-80 with this application. With your permission, I would like to exclude 129-020-80 from the application. If you respond to this email, we will have sufficient documentation of your intent.

Sincerely,

Gaylon F. Norwood
Assistant Director of Planning
and Building Services
Lassen County
707 Nevada Street Suite 5
Susanville, CA 96130
(530) 251-8269
Fax: (530) 251-8373

From: Egan, Joe [<mailto:joe.egan@PlumasBank.com>]
Sent: Thursday, July 26, 2018 1:55 PM
To: Gaylon Norwood <GNorwood@co.lassen.ca.us>
Cc: Richard Egan <r_hegan@frontiernet.net>
Subject: Parcel Map

Hi Galen

Based on our discussion, legal access for the homesite is available via the connection to Indians Rd.

Thanks

*Joe Egan, SVP/Manager Agricultural Services
3000 Riverside Drive, Susanville, CA 96130
(o) 530-257-5013 ext 1816 (c) 530-249-3426*

Please send secure email to the address below:

<http://dropbox.yousendit.com/AGLending9292102>



County of Lassen
Department of Planning and Building Services

• Planning • Building Permits • Code Enforcement • Surveyor • Surface Mining

Maurice L. Anderson, *Director*
707 Nevada Street, Suite 5
Susanville, CA 96130-3912
Phone: 530 251-8269
Fax: 530 251-8373
email: landuse@co.lassen.ca.us
website: www.co.lassen.ca.us

July 27, 2018

 **DRAFT**

Zoning & Building
Inspection Requests
Phone: 530 257-5263

TO: Technical Advisory Committee
Agenda Date: August 2, 2018

FROM: Don Willis, Lassen County Surveyor

SUBJECT: Parcel Map No. 2018-004 – Daniel and Mary Egan, et al.

LASSEN COUNTY SURVEYOR FINDS AS FOLLOWS:

1. The parcel to be considered as shown on the tentative parcel map submitted on July 10, 2018 with application for Parcel Map No. 2018-004 is owned by Daniel L. Egan and Mary K. Egan, Trustees of the Daniel L. Egan and Mary K. Egan Revocable Trust dated April 25, 2014 and Richard C. Egan and Holly S. Egan, Trustees of the Egan Family Trust of 2006, dated April 4, 2006 and Joseph P. Egan and Dawn E. Egan, Co-Trustees of the Joseph & Dawn Egan Family Trust Agreement, dated December 14, 2017, per that certain Grant Deed recorded on December 29, 2017 as Document No. 2017-05711 of the Official Records of Lassen County, California.
2. The legal description shown in the vesting deed in Findings Item Number One describes the property as Parcels A and B as shown on "Record of Survey 08-28-04 showing Lot Line Adjustment No. 2004-81 for Carl and Linda Smid" which was filed on September 24, 2004 in the Office of the Lassen County Recorder in Book 39 of Maps at Page 28. Note that only Parcel A is a part of the proposed land division represented by Parcel Map No. 2018-004.
3. The subject parcel (Parcel A of said Record of Survey 08-28-04) is located in portions of Sections 1, 2 and 12, Township 28 North, Range 12 East, Mount Diablo Base and Meridian, in Lassen County, California. This parcel is represented by Assessor's Parcel Numbers 129-020-59, 129-020-78 and 129-020-79.
4. The underlying legal parcel of the subject property described above was created as a result of Lot Line Adjustment No. 2004-81 as approved by the Lassen County Technical Advisory Committee on August 11, 2004. This project created two separate legal parcels and the Certificate of Lot Line Adjustment document was recorded on September 24, 2004 as Document No. 2004-09173 of the Official Records of Lassen County. The subject property is described as Resultant Parcel A in said Certificate of Lot Line Adjustment document.
5. The tentative parcel map submitted for Parcel Map No. 2018-004 shows the proposed division will create a 10.12 acre parcel labeled as Parcel A and a 102.29 acre parcel labeled as a Remainder. Parcel A is represented by Assessor's Parcel Number

129-020-59 and the Remainder is represented by Assessor's Parcel Numbers 129-020-78 and 129-020-79. A Segregation of Homesite has been requested for the 10.12 acre parcel in accordance with Section 18.108.250 of the Lassen County Code.

6. The tentative parcel map submitted for Parcel Map No. 2018-004 shows access to the subject parcels by way of Elysian Valley Way, also known as Elysian Creek Way. This roadway is a private road and is not within the Lassen County maintained road system. The tentative parcel map does not show that Indians Road, County Road No. 224, adjoins proposed Parcel A and could serve as legal access. A portion of the Northerly boundary line of proposed Parcel A falls within the right-of-way of said Indians Road as shown on Parcel Map No. 10-2-75, recorded at Book 10 of Maps, Pages 190-191, of the Official Records of Lassen County. This is demonstrated by the location of the East one-quarter of Section 2, Township 28 North, Range 12 East, Mount Diablo Base and Meridian, which is shown as being within the right-of-way of said Indians Road. This corner represents the Northwest corner of proposed Parcel A as shown on the submitted tentative map. Interestingly, there appear to be two different record positions for the East one-quarter corner of said Section 2 as noted at 30 Maps 22 and 39 Maps 28 of the Official Records. The two record positions are approximately 43 feet apart, however a portion of the Northerly boundary line of proposed Parcel A would be located within the right-of-way of said Indians Road regardless of which position is selected. A site visit made on July 26, 2018 confirmed that the Northwest corner of proposed Parcel A does appear to fall within the right-of-way of said Indians Road.
7. It appears that the access currently being used for the subject property is via Elysian Creek Way. There have been several easements recorded to provide legal access to the property over said roadway. One of these easements is per Book 524, Page 895, of the Official Records of Lassen County. This easement provides for an approximately 40 foot long, 50 foot wide, non-exclusive easement for access and utility purposes over the Southerly portion of Parcel B of Parcel Map No. 10-2-75, as the same is recorded at Book 10 of Maps, Pages 190-191, of the Official Records of Lassen County. An additional recorded easement provides for a 20 foot wide easement from the Southerly boundary of said Parcel B to the Westerly boundary of proposed Parcel A, which was recorded as Document No. 2003-02396 of the Official Records of Lassen County. There is also an additional easement that provides legal access from Elysian Valley Road to the subject property which was recorded per Document No. 2004-02144 of the Official Records of Lassen County. This provides for a 20 foot wide easement from the Easterly boundary of proposed Parcel A to Elysian Valley Road, County Road No. 219. Although these easements have been recorded, they are not of sufficient width (with the exception of the 50 foot wide easement per Book 524, Page 895) to satisfy the current provisions of the Lassen County Code regarding proposed land divisions. However, these easements will not need to be utilized for the proposed division due to Indians Road, County Road No. 224, providing legal access to proposed Parcel A.
8. The requirements for the subdivision of land in California are established by California

Government Code Section 66410, et seq., known as the Subdivision Map Act.

9. The requirements for the subdivision of land in Lassen County are established by Lassen County Code Title 16, Subdivisions.
10. The requirements for Parcel Maps in Lassen County are established by Lassen County Code, Chapter 16.20.
11. The requirements for a Segregation of Homesite in Lassen County are established by Lassen County Code Title 18, Zoning, Chapter 18.108, Special Provisions, Section 18.108.250.

**LASSEN COUNTY SURVEYOR RECOMMENDS THE FOLLOWING CONDITIONS
FOR PARCEL MAP NO. 2018-004 (DANIEL AND MARY EGAN, ET AL.):**

1. Owner(s), owner's agent(s) or applicant shall satisfy and the project shall meet all applicable requirements provided by law.
2. The parcel shall be subdivided as shown on the tentative map (Daniel and Mary Egan Revocable Trust) submitted on July 10, 2018 for Parcel Map No. 2018-004.
3. Owner shall offer for dedication to the County of Lassen an easement for public road and public utility purposes over that portion of Indians Road, County Road No. 224, lying Southerly of the Northerly boundary line of proposed Parcel A and lying Easterly of the Westerly boundary line of proposed Parcel A.
4. Owner shall cause a field survey of the property shown on the tentative parcel map submitted for Parcel Map No. 2018-004 to be completed in accordance with Section 66448 of the Subdivision Map Act and Section 16.20.160 of the Lassen County Code.
5. In accordance with Section 66411.1 of the Subdivision Map Act, if the applicant requests a deferral of the construction of any on or off site improvements required by the conditional approval of the tentative parcel map submitted for Parcel Map No. 2018-004, the Parcel Map shall contain a note stating the construction of improvements required by the conditional approval of the tentative parcel map submitted for Parcel Map No. 2018-004 shall be completed before any permit or other grant of approval for development of the parcels shown on the Parcel Map is approved and/or issued.
6. Owner(s), owner's agent(s) or applicant shall provide information and/or required documentation to demonstrate the project meets all applicable requirements established by the California Subdivision Map Act and Lassen County Code. The applicant shall also provide documentation required to demonstrate that all conditions of approval for Parcel Map No. 2018-004 have been satisfied or fulfilled.

7. Owner(s), owner's agent(s) or applicant shall submit a preliminary copy of the Parcel Map meeting the requirements of Article 3, Parcel Maps, Sections 66444-66450 of the Subdivision Map Act and Lassen County Code, Chapter 16.20, Sections 16.20.170 and 16.20.180, to the Lassen County Surveyor for review and approval. The Parcel Map will reference and show all easements of record, or any created or offered for dedication, including those shown on the tentative parcel map for Parcel Map No. 2018-004, which affect the parcel being subdivided or those being created. This review submittal shall also include the following:
 - (a) A current Condition of Title report for the property shown on the tentative parcel map submitted for Parcel Map No. 2018-004.
 - (b) All information required by Lassen County Code, Chapter 16.20, Sections 16.20.180 and 16.20.190.
 - (c) An index of specific recorded survey maps (i.e. Records of Surveys, Parcel Maps, Subdivision Maps, GLO Maps and field notes) used to prepare the Parcel Map.
 - (d) Copies of other maps, documents and data used to prepare the Parcel Map if unavailable in the Lassen County Surveyor's Office.
 - (e) All fees required for this review.
8. After the Parcel Map, including its form and content, have been determined to be acceptable by the County Surveyor, in accordance with Lassen County Code, Section 16.20.200, and all conditions of the conditional approval of the tentative parcel map submitted for Parcel Map No. 2018-004 have been acceptably met, the owner(s), owner's agent(s) or applicant shall submit an original mylar of the Parcel Map, corrected to its approved final form and signed by all parties required to execute the certificates on the map, to the County Surveyor for recording in the office of the Lassen County Recorder in accordance with Lassen County Code, Sections 16.20.210 and 16.20.220. This submittal of the Parcel Map shall also include any documents which are required to be recorded concurrently with the Parcel Map. A Parcel Map Guarantee shall also be submitted along with the appropriate fees necessary to the record the Parcel Map and any related documents.
9. If there are any Deeds of Trust on the property, either the Trustee or the Beneficiary shall sign a certificate statement on the Parcel Map approving of the subdivision and the recording of the Parcel Map in accordance with Section 66445(e) of the Subdivision Map Act and Section 16.20.180(3)(A)(B) of the Lassen County Code.
10. A note shall be placed on the Parcel Map stating that "This land division is allowed pursuant to Lassen County Code, Section 18.108.250, Segregation of Homesites in

Agricultural Zones. No additional Homesites shall be segregated from this property until at least ten (10) years have elapsed from the date of recordation of this Parcel Map. This restriction shall be binding upon the original owners and their heirs, successors and assigns of the property shown on this Parcel Map”.

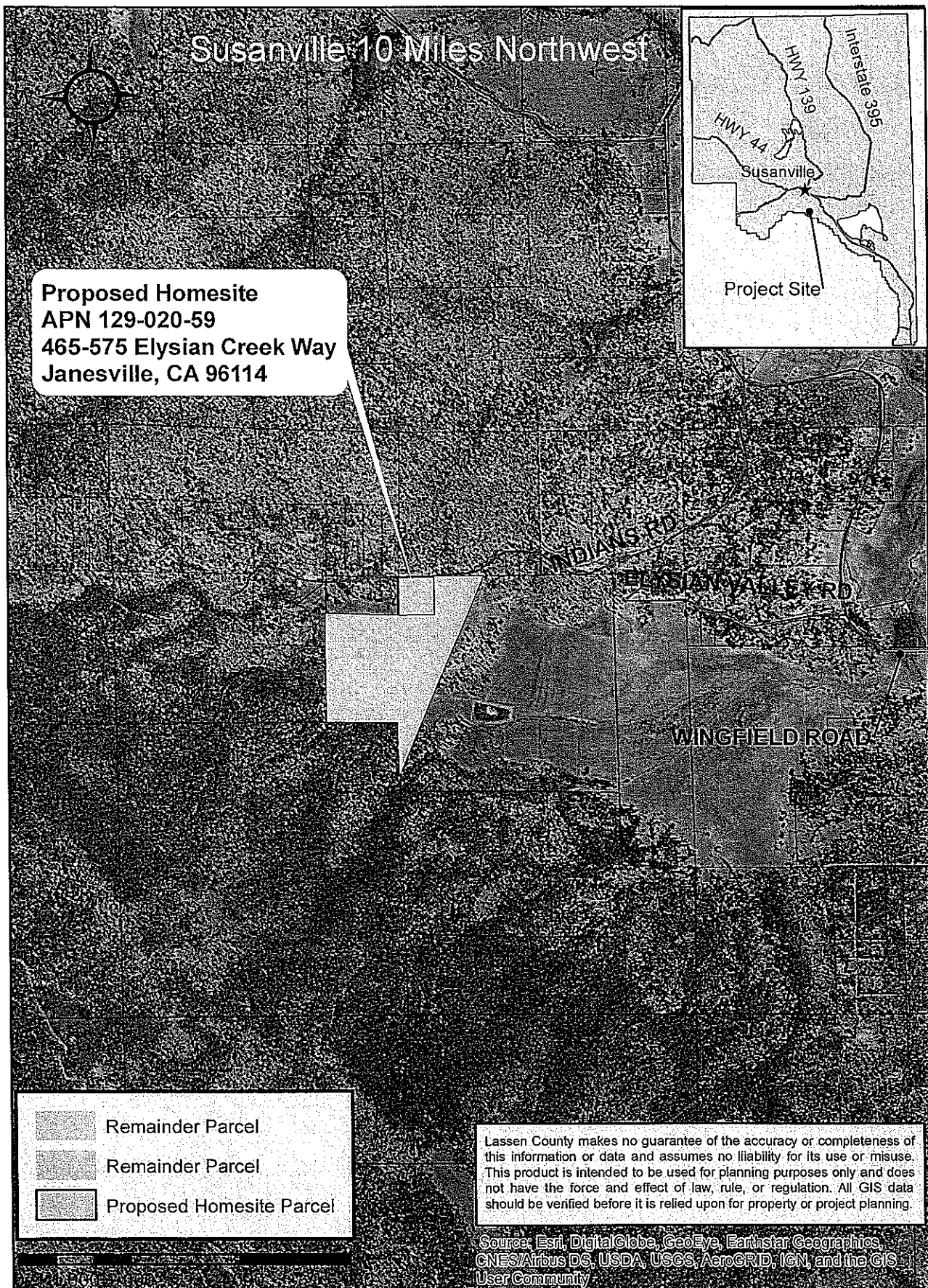
11. Prior to recordation of Parcel Map No. 2018-004, documentation shall be provided to the Lassen County Surveyor's Office which demonstrates that the Lassen County Tax Collector is satisfied that all current and delinquent property taxes have been paid, including funds deposited that are equivalent to all estimated taxes which have become a lien not yet due or payable, for all parcels involved in the proposed land division.

Respectfully submitted,



Don Willis, L.S. 7742
Lassen County Surveyor

PARCEL MAP #2018-004, Daniel and Mary Egan Revocable Trust



glet

AGENDA
LASSEN COUNTY PLANNING COMMISSION
BOARD CHAMBERS, 707 NEVADA STREET
SUSANVILLE, CA 96130
August 1, 2018

RECEIVED

JUL 30 2018

JUL 30 2018
LASSEN COUNTY CLERK
By [Signature] Deputy

1:10 p.m. Convene in Regular Session
Flag Salute
Roll Call
General Update of Planning Activities
Matters Initiated by Commissioners
Correspondence
Presentation by Staff
Approval of Minutes
Matters Initiated by the General Public
Next Resolution in line for adoption: 8-01-18

1:20 p.m. **PUBLIC HEARING: USE PERMIT #2018-010, Turner.** The applicant is proposing up to a 1,400 square foot single family residence to be used as a second residence. The parcel is zoned A-1 (General Agriculture District) and has a land use designation of "Intensive Agriculture" in the *Lassen County General Plan, 2000*. The project is exempt from California Environmental Quality Act (CEQA) pursuant to Section 15303(a) of the (CEQA) Guidelines. The parcel is located approximately ¾ of a mile southwest of Highway 395, in Milford, CA. APN: 135-160-16. Staff Contact: Kelly Mumper, Assistant Planner.

1:25 p.m. **PUBLIC HEARING: USE PERMIT #2018-006, Norm Clover.** The applicant is proposing the placement of 12 temporary storage buildings to be displayed for offsite sale. The parcel zoned C-2-D (General Commercial, Design Combining District) and has a land use designation of "Commercial" in the *Janesville Planning Area Amendments of 1993*, and the *Lassen County General Plan, 2000*. The proposed project is exempt from the California Environmental Quality Act (CEQA) pursuant to section 15061(b) (3) of the Guidelines. The parcel is located on the frontage of U.S. Highway 395 South and Janesville Main Street in Janesville CA, 96114. APN: 129-660-21. Staff Contact: Kelly Mumper, Assistant Planner.

1:30 p.m. **PUBLIC HEARING: PARCEL MAP #2018-003, Patrick, Beverly, and Keith Wood.** Proposal to divide a 161.14 acre parcel into two parcels: Resultant Parcel A is 80 acres and Resultant Parcel B is 81.14 acres in size. The subject parcel is zoned U-C-2 (Upland Conservation/Resource Management District), and has an "Extensive Agriculture" land use designation in the *Lassen County General Plan, 2000*. The proposed project is not subject to further CEQA review pursuant to Section 15183 of the Guidelines. The project site is bisected by Hayden Hill Road approximately 2 miles west of U.S. Highway 139 in Bieber CA 96009. APN(S): 017-090-11, and 029-010-10. Staff Contact: Kelly Mumper, Assistant Planner.

ADJOURN

Certain actions of the Commission are appealable to the Board of Supervisors. The appeal period is ten days from the date of the Commission's action. For specific information on appeals, please contact the Lassen County Planning and Building Services Department at 530-251-8269.

KM MLA:aje

AG8/1/2018

9/6/18

**LASSEN COUNTY BEHAVIORAL HEALTH
ADVISORY BOARD MEETING**

August 13, 2018

1400A Chestnut Street, Susanville, CA 96130

5:30PM

Telephone: 251-8108

AGENDA

1. Call to Order
2. Approval of the Agenda – Action
3. Approval of the Minutes –June 2018
4. Public Comment* - Information
5. Department Report
6. Board Report
7. Aurora
8. NAMI
9. Board Member Recruitment
10. Safe Talk / Assist update – Nicole Lamica
11. Suicide Prevention
12. MHSA Annual Update/Stakeholder Meetings
13. Consideration of Future Agenda Items
14. Next Meeting Date and Time
15. Adjournment

- * Any person desiring to address the Board shall first secure permission of the presiding officer.
- * Speaker cards are provided so that individuals can bring to the attention of the presiding officer their desire to speak on a particular agenda item. Cards are available on the table by the door and shall be completed and presented to the Secretary in advance of speaking.
- * Matters under the jurisdiction of the Board, and not on the Agenda, may be addressed by the Public at the time provided in the Agenda under Public Comment. The Board limits testimony on those items to three minutes per person and no more than three individuals shall address the same subject.