



State of California – Natural Resources Agency
DEPARTMENT OF FISH AND WILDLIFE
Northern Region
601 Locust Street
Redding, CA 96001
www.wildlife.ca.gov

GAVIN NEWSOM, Governor
CHARLTON H. BONHAM, Director



11/6/2023

Lassen County Board of Supervisors
221 S. Roop Street, Suite 4
Susanville, CA 96130

Subject: CDFW Response to July 2023 Director's Commitments

Dear Chairperson:

On July 11th, 2023, California Department of Fish and Wildlife (CDFW) Director Charles Bonham spoke to the Lassen County Board of Supervisors (BOS) and promised to address several issues of concern to the County and its constituents. After the meeting we coordinated with Tony Shaw, Deputy County Administrative Officer, who recommended that CDFW provide a written response regarding each topic addressed to the Lassen County Board of Supervisors. Please see our comments and answers below and we look forward to further discussions with County staff and establishing regular meetings and/or presentation with local CDFW and County staff.

Northern Region-Specific Issues:

1. **Meet with City, County staff, and Lassen F&G Commission to discuss urban deer management in Susanville.**

We look forward to finding a cooperative solution to address public concerns related to species management within the City of Susanville and will work with the Lassen County Fish and Game Commission and/or the Lassen County BOS. Brian Ehler, Lassen County Unit Biologist, will be our lead in those discussions with the assistance of Branch staff including Brian Leo, Statewide deer coordinator as appropriate. Regional staff are willing to meet with County staff on a quarterly basis, beginning in January 2024, to present strategies to reduce human-deer conflict within an urban setting. A helpful resource is this document developed by the Association of Fish and Wildlife Agencies. This document offers management options to communities and agency leadership for resolving common human conflicts with urban deer. It provides an overview of the common issues and identifies common management practices with their associated benefits and challenges.

Lassen County Board of Supervisors
11/6/2023
Page 2

[https://www.fishwildlife.org/application/files/7315/3745/9637/AFWA_Deer Mngmt Pop Areas August 31 2018 version.pdf](https://www.fishwildlife.org/application/files/7315/3745/9637/AFWA_Deer_Mngmt_Pop_Areas_August_31_2018_version.pdf)

2. Meet with BOS and County staff to discuss management and current science of local wildlife species.

We are happy to have the opportunity to provide updates on local wildlife species (mountain lion, gray wolf, black bear, mule deer, elk & pronghorn) and describe current management practices to the County. Brian Ehler, Lassen County Unit Biologist, will be available to present and answer questions for county staff upon request, and will be willing to present wildlife updates to the BOS on a quarterly basis beginning in January 2024.

3. Have quarterly discussions with the BOS to discuss their priorities for CDFW Wildlife Areas in Lassen County (including grazing to control weeds).

We are happy to schedule quarterly meetings with local staff, please provide us with a date and time that you would like to meet and future meetings can be planned at that time. CDFW has started the internal process to develop a grazing plan for the Willow Creek Wildlife Area. Grazing at Ash Creek Wildlife Area is also a high priority and we have also started internal discussions on the goals and objectives for grazing at Honey Lake Wildlife Area.

Wildlife Branch and Region 1 Coordinated Issues:

4. Have greater CDFW presence in Lassen County, especially to discuss wolf management.

We have attended meetings where CDFW staff have been requested to participate and will continue to do so. We look forward to meetings that are more collaborative in nature where we can resolve ongoing and future challenges faced by constituents within Lassen County. Brian Ehler, Lassen County Unit Biologist (530-340-6808) is available locally to answer any questions or to discuss wildlife management in general. Kent Laudon, Wolf Specialist, Northern Region (530-215-0751), can address specific questions related to wolf management.

5. Is CDFW aware of any hybridization between wolves and coyotes in California?

There is no evidence of wolf/coyote hybridization in California, or other western states that have wolves including the Northern Rockies that have had wolves for decades. In eastern states, there has been some genetic mixing of these species, most likely having occurred hundreds of years ago. Looking into the future, hybridization in California is unlikely. Wolves are highly territorial against coyotes and will kill them.

Lassen County Board of Supervisors
11/6/2023
Page 3

6. Clarify whether the Plumas pack was founded by two siblings (a breeding pair) from the Lassen Pack, and whether the "hole in the ground" breeding pair is from the Whaleback pack.

The Plumas pack, Beyem Seyo, was founded by two half siblings from the Lassen pack 2020 litters (same father, different mothers). In 2020 the Lassen pack had a double litter when two females bred with a new breeding male.

The new wolf pack in Lassen County, initially referred to as "Hole In The Ground" (name of a meadow within their home range) has been formally named the Harvey pack (the name of a mountain and valley within their home range). The female is a disperser from the Whaleback pack 2021 litter. The male's origin is not yet known, but it is known that he does not originate from any California packs, nor the Rogue pack in southwest Oregon. Genetic samples must be collected and sent to the University of Idaho to compare his DNA with wolves in other areas (e.g., northeast Oregon) to further determine his origin. Historically, it has taken over a year to get results. Results will be published when available.

7. How many wolf compensation requests were denied or had the requested amount reduced?

CDFW has not denied any applications to date, however an initial compensation calculation may be adjusted. Thirty of 58 compensation calculations estimated by applicants have been adjusted by CDFW. The total amount of compensation may change (some higher, some lower) based on the supporting documentation, including location of the livestock operation relative to wolf home ranges and in accordance with the formulas outlined in Wolf Compensation Pilot Program. CDFW program staff work with each prospective applicant to confirm eligibility and compensation request type (Prongs 1-3).

8. Can the County and CDFW look at the Wolf Management Plan together to discuss the definition of "injurious harassment" and management options in Phases 2 & 3?

CDFW welcomes the opportunity to provide technical assistance to the County regarding the Wolf Management Plan. The Office of General Counsel, Wildlife & Fisheries Division, Law Enforcement Division, and Program staff can provide information and guidance specific to Phases 2 & 3. Please contact Regional CDFW staff to set up a virtual meeting or in-person meeting. We suggest biannual meetings on wolf management with the Lassen BOS beginning in January 2024.

9. How many hunters in California?

According to CDFW's License & Revenue Branch, the best metric to track this information by number of hunting licenses sold. As of August 31, 2023, 183,318 hunting licenses were sold in California. This includes 159, 654 resident hunter licenses, 6,541

Lassen County Board of Supervisors
11/6/2023
Page 4

lifetime hunter licenses, 9,440 junior hunters, and 3,831 disabled veteran licenses. This roughly approximates the number of legal hunters in California, although the 2023 hunting season has by no means ended so the numbers are likely under-represented. For context, 247,185 total licenses were sold in 2020, and 223,492 in 2022. For more information on CDFW License & Revenue Branch statistics, please check our website:

<https://nrm.dfg.ca.gov/FileHandler.ashx?DocumentID=178041&inline>

10. Complete first draft of Bear Management Plan and put out for public comment later this year.

An initial draft of the revised black bear conservation and management plan has been sent out for internal review and will include concurrent peer and Tribal review prior to full public review and comment later this year through early next year. We expect to finalize the plan by late Spring 2024. It will include updated and improved integrated population modeling methods for monitoring bear population sizes using age information inferred from tooth samples provided by approximately 1,000 successful bear hunters each year. This age information provided by hunters is our single best source of population monitoring data. In part to better conserve local bear populations while enhancing hunter opportunity, we anticipate moving from a single statewide harvest quota (currently 1,700) to local population estimates and harvest quotas for six bear management regions representing different ecological regions of the state. The plan itself will not recommend any increases or decreases of bear harvest quotas, seasons, or methods of take. Rather it will provide a transparent methodology for how the Department will collect data and how it would use this information to make future recommendations to the Fish and Game Commission for hunting regulations.

11. Follow up with County about whether the bear zone will be expanded east of Hwy 139 using the Warner Mtn Bear Study results.


The Department has studied bear population movements and abundance in the Warner Mountains to better evaluate their potential to be hunted among other conservation implications. As discussed above, CDFW scientists are in the process of updating California's Conservation Plan for Black Bear which we expect to complete by late Spring 2024. The revised plan includes detail for how age distribution data (i.e., rings on teeth from harvested bears can be aged like trees) largely provided by hunters will be used in a new Integrated Population Model to improve monitoring of bear populations in different regions of the state. The plan also details how this information could be used to support future regulation change proposals that expand hunter opportunities without adversely affecting conservation.

If you require further information, discussion, or would like to arrange for a presentation from CDFW, please contact our local contact for CDFW Lassen Unit Biologist, Brian Ehler, at (530) 340-6808 or Brian.Ehler@wildlife.ca.gov or our CDFW Wildlife

Lassen County Board of Supervisors
11/6/2023
Page 5

Management Supervisor for Lassen, Modoc and Siskiyou Counties, Christine Found-Jackson, at (530)340-5977 or Christine.Found-Jackson@Wildlife.ca.gov .

Sincerely,

DocuSigned by:

1D82ADE7303A474...

Tina Bartlett,
Regional Manager, Region 1, CDFW

cc: Tony Shaw, Lassen County, tshaw@co.lassen.ca.us
Christine Found-Jackson, CDFW
Jeffrey Stoddard, CDFW



County of Lassen

Department of Planning and Building Services

• Planning • Building • Environmental Health • Code Enforcement • Surveyor • Surface Mining

112

Maurice L. Anderson, Director
707 Nevada Street, Suite 5
Susanville, CA 96130-3912
Phone: 530 251-8269
Fax: 530 251-8373
email: landuse@co.lassen.ca.us
website: www.co.lassen.ca.us

December 4, 2023

TO: Lassen County Board of Supervisors
FROM: Maurice Anderson, Director
RE: Property Purchase, Bureau of Land Management

Zoning & Building
Inspection Requests
Phone: 530 257-5263

Project Description

The Bureau of Land Management (BLM) is preparing a Determination of National Environmental Policy Act (NEPA) Adequacy (DNA) that covers the purchase of a 283.24-acres of privately-owned land within Lassen County. This process includes an environmental review, hazardous waste survey, appraisal, and a fair market value payment to the private landowner. If DNA is approved, the BLM would plan to complete the transaction and acquire the land, by spring 2024. Once acquired these lands would be made part of the public domain and open for public use and enjoyment. The subject parcels are located in Herlong, CA. (APN's: 139-040-032, 139-040-027, and 139-040-028).

The Planning Division of the Lassen County Department of Planning and Building Services finds as follows:

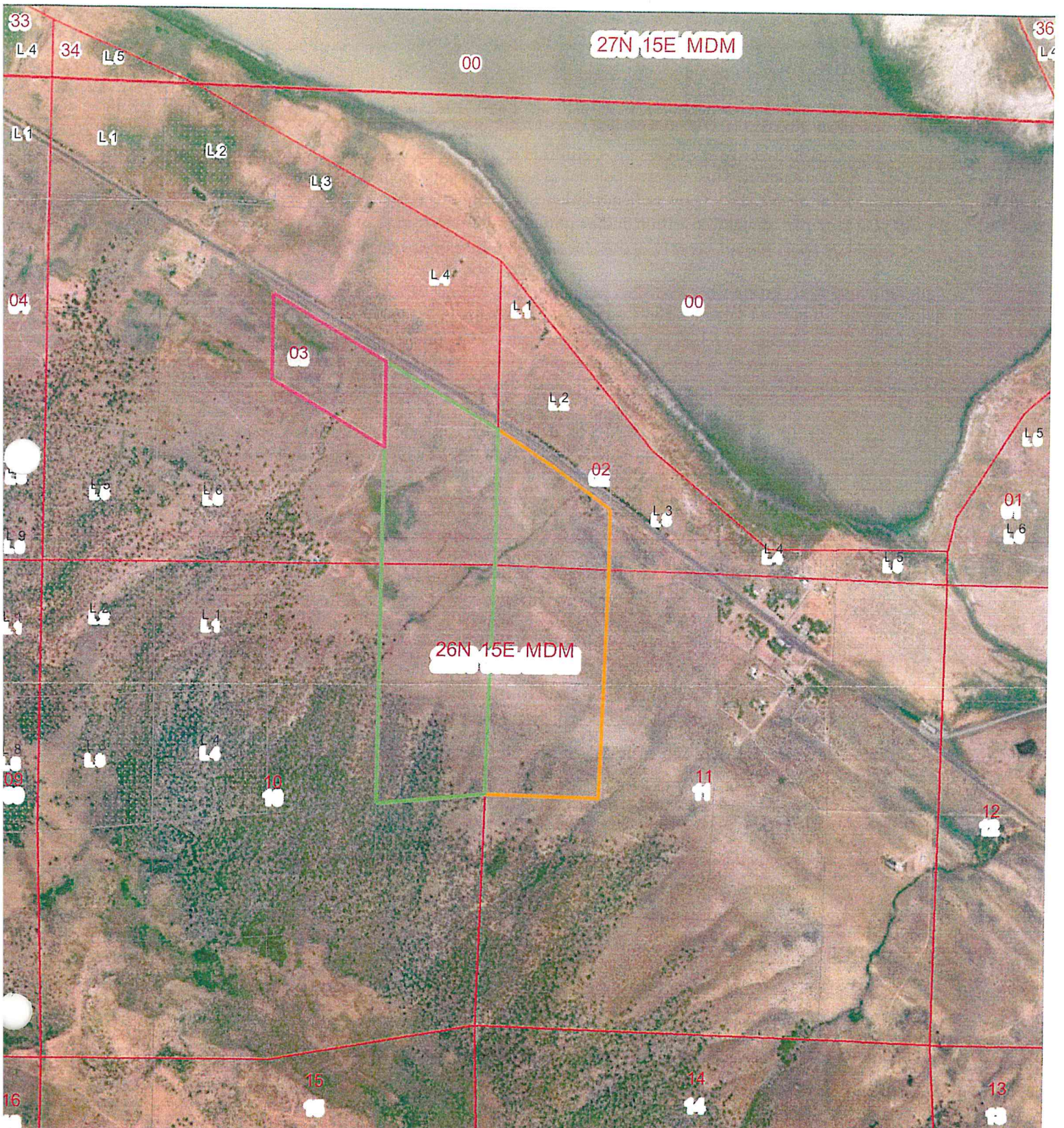
1. The Bureau of Land Management is preparing a determination of National Environmental Policy Act (NEPA) Adequacy (DNA) that covers the purchase of approximately 283.24- acres of privately-owned land.
3. APN's 139-040-032, 139-040-027, and 139-040-028 are zoned A-1 (General Agricultural district).
4. The subject parcels are located Herlong, CA.
5. All parcels are undeveloped.
6. The property tax loss is approximately \$1494.74 a year.

Herlong Junction Acquisition



U.S. Department of the Interior
BUREAU OF LAND MANAGEMENT
California State Office
Sacramento, California
(916) 978-4343
www.blm.gov/california
Date Prepared: 1/17/2023
Project: Master.mxd

Parcel_1
Parcel_2
Parcel_3

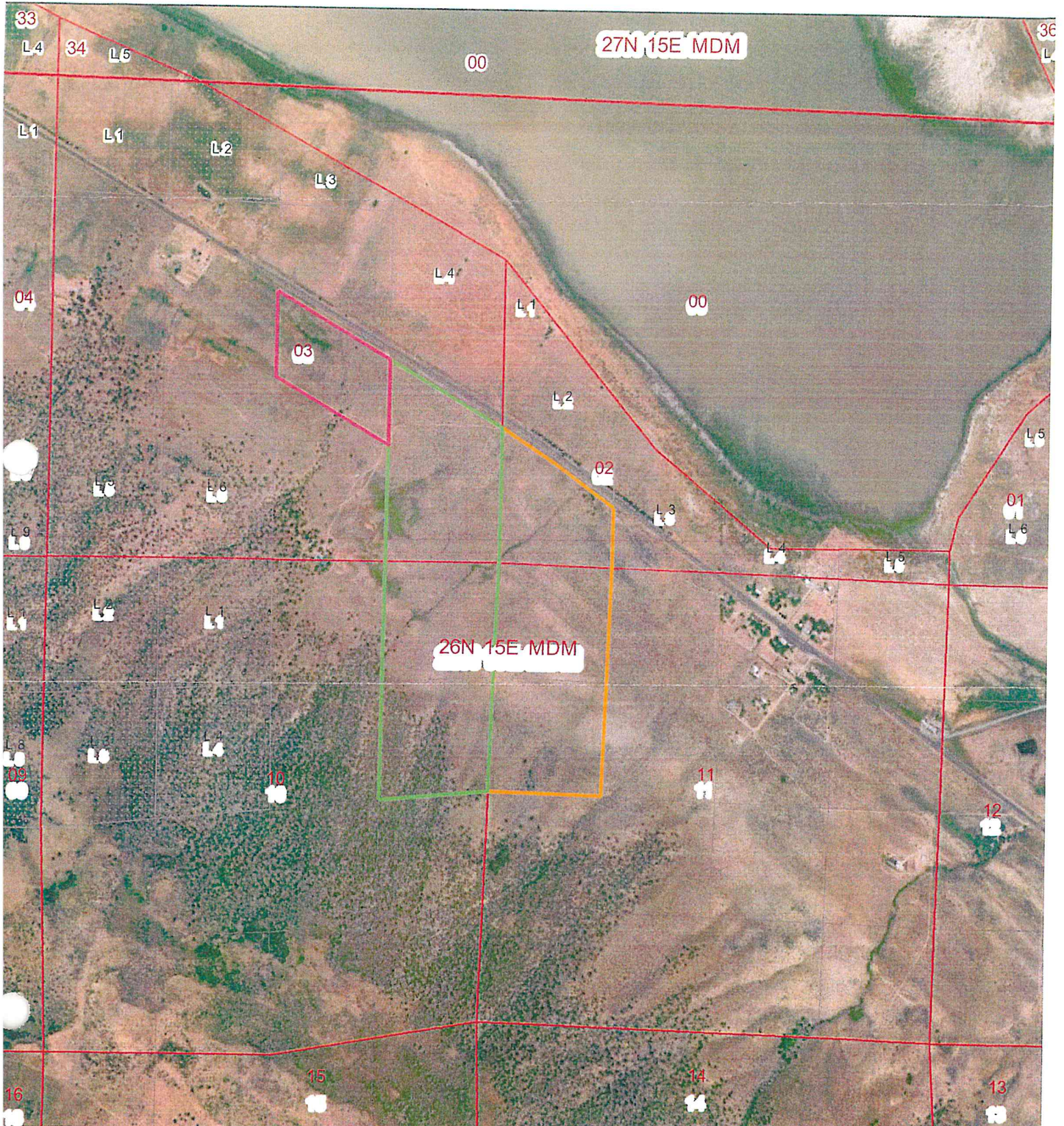


Herlong Junction Acquisition



US Department of the Interior
BUREAU OF LAND MANAGEMENT
California State Office
Sacramento, California
(916) 978-4343
www.blm.gov/california
Date Prepared: 1/17/2023
Project: Master.mxd

Parcel_1
Parcel_2
Parcel_3





County of Lassen


Department of Planning and Building Services

• Planning • Building • Environmental Health • Code Enforcement • Surveyor • Surface Mining

116

Maurice L. Anderson, *Director*
707 Nevada Street, Suite 5
Susanville, CA 96130-3912
Phone: 530 251-8269
Fax: 530 251-8373
email: landuse@co.lassen.ca.us
website: www.co.lassen.ca.us

December 4, 2023

TO: Lassen County Board of Supervisors
FROM: Maurice Anderson, Director 
RE: Property Purchase, Bureau of Land Management

Zoning & Building
Inspection Requests
Phone: 530 257-5263

Project Description

The Bureau of Land Management (BLM) is preparing a Determination of National Environmental Policy Act (NEPA) Adequacy (DNA) that covers the purchase of a 760-acres of privately-owned land within Lassen County. This process includes an environmental review, hazardous waste survey, appraisal, and a fair market value payment to the private landowner. If DNA is approved, the BLM would plan to complete the transaction and acquire the land, by spring 2024. Once acquired these lands would be made part of the public domain and open for public use and enjoyment. The subject parcels are located in Standish, CA. (APN's: 131-080-002, 119-450-006, 119-460-010, and a portion of 131-080-003).

The Planning Division of the Lassen County Department of Planning and Building Services finds as follows:

1. The Bureau of Land Management is preparing a determination of National Environmental Policy Act (NEPA) Adequacy (DNA) that covers the purchase of approximately 760-acres of privately-owned land.
2. APN 131-080-002 is zoned E-A (Exclusive Agricultural District), APN's 119-450-006, and 119-460-010 are zoned U-C (Upland Conservation District), and APN 131-080-003 is split zoned E-A/E-A-D (Exclusive Agricultural District/Exclusive Agricultural Design Combing District).
3. The subject parcels are located Standish, CA.
4. All parcels are undeveloped.
5. The property tax loss is approximately \$1440.10 a year.



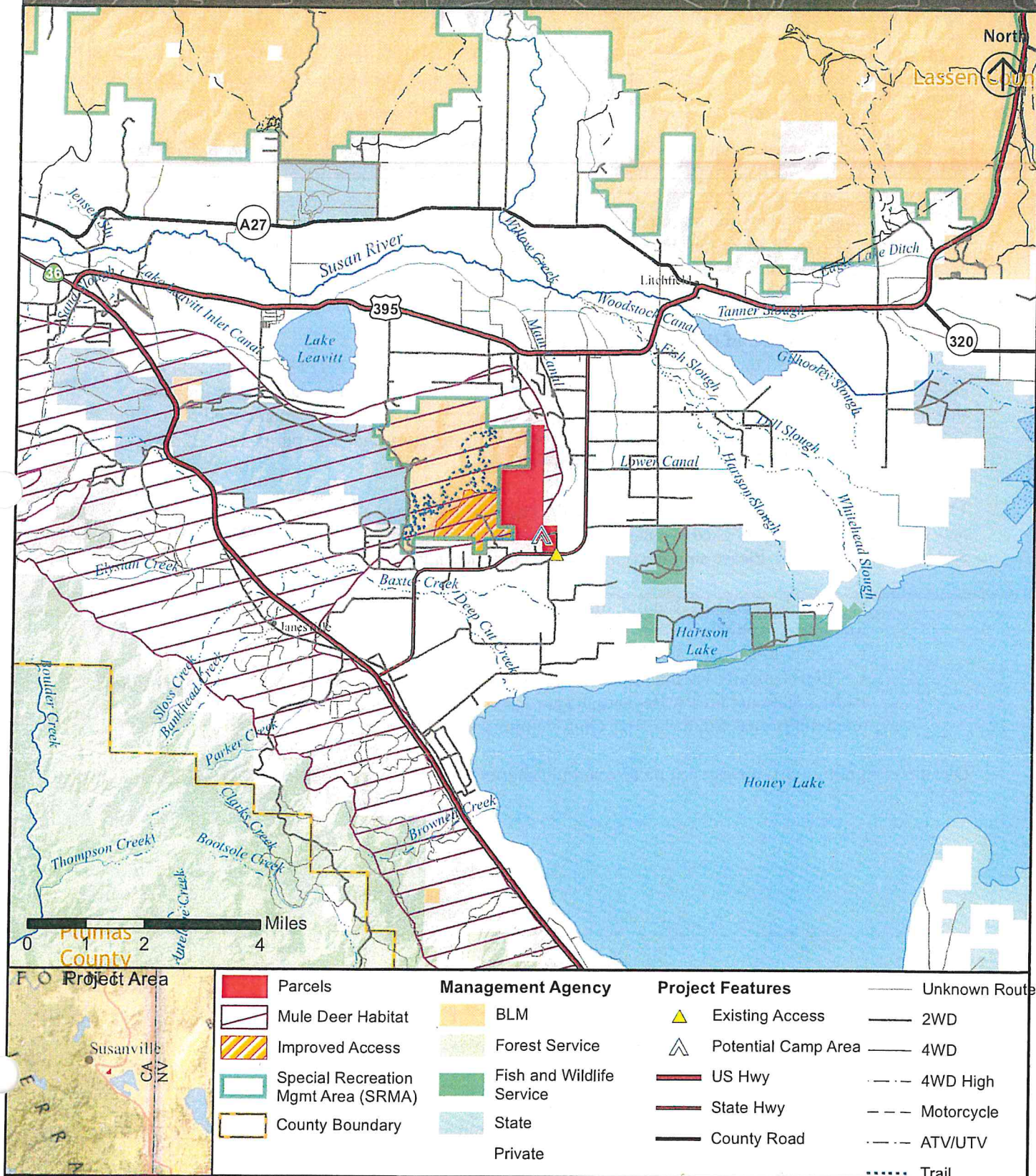
US DEPARTMENT OF INTERIOR
BUREAU OF LAND
MANAGEMENT

California

blm.gov/california

Bald Mountain SRMA Project

Northern California District, Eagle Lake Field Office





US DEPARTMENT OF INTERIOR
BUREAU OF LAND
MANAGEMENT

California

blm.gov/california

Bald Mountain SRMA Project

Northern California District, Eagle Lake Field Office

