

91301

\*\*\*\*\* PUBLIC NOTICE \*\*\*\*\*



**PLANNING AND SERVICE AREA 2 AREA AGENCY ON AGING  
(PSA 2 AAA)**

**Advisory Council Virtual Meeting**

Friday, March 27, 2026

10:00 a.m.

**Public access information for this virtual meeting  
is available by contacting:**

**PSA 2 Area Agency on Aging at**

**530-842-1687 or [programcoordinator@psa2.org](mailto:programcoordinator@psa2.org)**

**Virtual Meeting access is also available at the following locations:**

**PSA 2 Area Agency on Aging  
208 W. Center Street, Yreka**

**PSA 2 Area Agency on Aging Conference Room  
1647 Hartnell Ave., Suite 9, Redding**

913b

LASSEN COUNTY FISH AND GAME COMMISSION  
707 NEVADA STREET, CALIFORNIA, CA 96130

REGULAR MEETING MINUTES  
THURSDAY January 15<sup>th</sup>, 2026

1. The meeting was called to order by Chairman Paul Smith at 7:02 pm.  
Representation (Roll Call) Dist. 1 – Clayton Harkness (alternate) - absent; Dist. 2 - Tony Ardito; Dist.3 Christian Siemer; Dist. 4 – Ryan Barney; Chairman & Dist. 5 – Paul Smith
2. Pledge of Allegiance led by Commissioner Barney.
3. Agenda Approval. Commissioner Ardito moved to approve the January 15<sup>th</sup>, 2026 Meeting Agenda. Seconded by Commissioner Barney, motion carried.
4. Minutes Approval. Commissioner Barney moved to approve the November 20<sup>th</sup>, 2025 Meeting Minutes. Seconded by Commissioner Siemer, motion carried.
5. Public Comment (Correspondence): None.
6. Agency Reports-
  - a) **Backcountry Horsemen:** Shasta/Trinity Unit – Larry Shuman, Sam Burrows, and Mike LaDue attended. Shuman spoke about their lake planting projects in the Northern & Southern Caribou Wilderness. BCHC then requested a donation from the Commission to help cover the volunteer's expenses for fish planting multiple lakes. A \$600 donation would help with the expense of trail clearing and planting fish for approximately 18 people and the planting of 26,500+ fingerlings in the Southern section of the Caribou Wilderness for 2026. Shuman reported they have had a great survival rate when the lakes are fish planted by the Horsemen instead of the fingerlings being flown in. Commissioner Ardito made a motion to agendaize this request and to approve the \$600 donation to the BCHC at the next F&G meeting, Commissioner Siemer seconded. An expenditure of \$600 to BCHC will now be on the February, 2026 meeting Agenda for approval.
  - b) **CDFW:** John Perrine, PhD, wildlife supervisor for Trinity, Shasta and Tehama counties presented a power point on the development of a Statewide Deer Conservation and Management Plan for California. He highlighted multiple plan points and asked for feedback from both the commission and guests in attendance. The Plan created by Brian Leo, Statewide Deer Coordinator can be found online at [Statewide Deer Management Plan for California](#). Perrine

comprehensively went through the Power Point presentation and discussion followed. Ardito asked what NGOs do you collaborate with most often and Perrine responded; Hunter's Associations, Rocky Mountain Elks, Cal Deer Association, and Defenders of Wildlife. Seimer commented that the predator population threats are not clearly identified in the current presentation. Discussion followed with Brian Ehler, CDFW weighing in on deer counts and other statistics. Barney asked what an adaptive time interval looks like when responding to needed change in the management plan. Lassen County Supervisor Gary Bridges stated that the 5-year evaluation time frame is inadequate and would like the state to evaluate their predator counts as well as to be more forthcoming on their overall numbers. Scott Parks, Erika Guisti, Rod O'Hern, Richard DeAtley, and Larry Roberts all contributed to a lively discussion of state rules, current conditions and tag opportunities.

- c) **BLM:** Emily Ryan provided a 12-page "Eagle Lake Field Office 2026 First Quarter Updates" for the Commissioners to review and respond to via email.
- d) **Forest Service:** No one present to report.
- e) **Lassen County Planning and Building:** Mindie Hilton reported Eagle Lake had an increase in elevation of 11.6" in December 2025, and then to 16.2" in January 2026. It is currently 1.35 feet above where it was last year.
- f) **Honey Lake RCD:** Kelsey Seimer reported the approved Raptor budget will accommodate boxes placed in coordination with Dan Lipp's map of best locations. They are hiring a new wildlife coordinator. Siemer distributed their 2024-2025 Annual Report. Chairman Smith asked about Barn Owl boxes being included with the Kestrel boxes. Discussion about disbursement and completion of the bird boxes followed.
- g) **Lassen County Sheriff's Office:** Sheriff John McGarva gave an in-depth update about his work on the grey wolf predations that have become a serious local public safety concern. The Sheriffs, other authorities and ranchers are attending meetings with State agencies and legislators. He is hoping for better resolution to the ongoing conflict surrounding the multiple wolf packs by addressing it with real facts at the State level. Current legislation urgently needs to be changed. Discussion followed.
- h) **Budget Reports:** Budget report was provided. Chairman Smith is concerned about the ongoing lack of revenue collected from the Court. Are the fines not being collected, and/or the deposits not being transferred to the F&G commission. Ehler mentioned that sometimes people make the lowest

payments possible on CDFW fines. Smith will be gathering more information to bring back to the next meeting.

7. Sub-Committee Reports- Commissioners Smith and Barney have heard the F&G Commission PSA on the radio. Kelsey Seimer, Honey Lake RCD affirmed that the radio will be notified and a report or interview will be made about the raptor bird house (Bird Box) project.
8. Old Business – None.
9. New Business
  - a. None.
10. Action Items (Matters Before the Commission) –
  - a. Raptor Projects – A motion was made by Commissioner Barney and seconded Commissioner Ardito to approve the raptor birdhouse project in partnership with the local high schools with cost to not exceed \$5,000. Motion passes unanimously.
11. Announcements by Commissioners- Smith mentions the 16<sup>th</sup> Annual Chowder Cook-Off sponsored by the Westwood Area Chamber of Commerce is an excellent fundraiser and encourages everyone to attend. Barney attended the public safety meeting in Spaulding, and the Eagle Lake Community is concerned about the growing mountain lion presence.
12. The next Lassen County Fish and Game Commission meeting will be Thursday, February 19<sup>th</sup>, 2026 at 7:00 p.m., at 707 Nevada St., in Susanville, CA.  
  
Meeting adjourned at 9:16 PM. Motion made by Commissioner Ardito. Seconded by Commissioner Barney. Motion carries.

9136

**LASSEN-PLUMAS-SIERRA COMMUNITY ACTION AGENCY  
BOARD OF DIRECTORS**

Odessie Welch, Chairperson  
Mark Nortrup, Vice Chairperson  
Vicki Barney, Board Secretary

Regular Meeting Agenda

Thursday, March 26, 2026 – 10:00 a.m. to 12:00 p.m.

Sierra County, Assembly of God Church

Cindy Ramsey, Executive Director

Michelle Majeski, Finance Director

Tricia Romandia, Administrative Assistant

- I. MEETING CALLED TO ORDER / ROLL CALL**
- II. PLEDGE OF ALLEGIANCE**
- III. ADDITIONS, CORRECTIONS OR DELETIONS TO OR FROM THE AGENDA**  
Discussion
- IV. APPROVAL OF AGENDA Discussion, Motion**
- V. APPROVAL OF MINUTES** – Approval of Minutes as of the December 18, 2025, Regular Meeting (Attachment V.A) **Discussion, Motion**
- VI. PUBLIC COMMENT** – Any member of the public may address the Board on matters which are within the jurisdiction of the Board. If you addressing the Board regarding a matter listed on the agenda, you are requested to hold your comments until the Board takes up that matter. Please limit your comments to three (3) minutes or less.
- VII. BOARD OF DIRECTORS ANNOUNCEMENTS AND REPORTS** – Informational announcements by members of the LPSCAA Board regarding issues related to LPSCAA. Information and clarifying questions only, no discussion.
- VIII. PRESENTATION** – High Sierra Family Resource Center – Concrete and Emergency Support Services **Report, Discussion** Michael McMillan
- IX. PROGRAMMATIC REPORTS**
  - A. LPSCAA Expenditure Report (Attachment IX.A) **Report, Discussion**  
Michelle Majeski
  - B. Finance Report January 2026 (Attachment IX.B) **Report, Discussion**  
Michelle Majeski

- X. **BOARD MEMBER RECRUITEMENT** (Attachments X.A, X.B, X.C. X.D, X.E, and X.F) **Report, Discussion** Cindy Ramsey.
  
- XI. **LASSEN COUNTY VACANCIES – Community and Public Seats**  
(Attachment XI.A) **Report, Discussion, Motion** Lassen County Board of Directors
  - A. Proposed Candidate / Community Seat - Mary Piowaty
  
- XII. **PLUMAS COUNTY VACANCY – Community Seat Report, Discussion**  
Plumas County Board of Directors
  
- XIII. **COMMUNITY NEEDS ASSESSMENT** (Attachment XIII.A) **Report, Discussion, Possible Motion** Cindy Ramsey
  
- XIV. **CSBG ANNUAL REPORT** (Attachment XIV.A) **Report, Discussion** Cindy Ramsey
  
- XV. **700 FORMS Report, Discussion** Cindy Ramsey
  
- XVI. **2026 DISCRETIONARY CONTRACT AND GRANT WRITING PREMPTIVE PLANNING** **Report, Discussion, Possible Motion** Cindy Ramsey
  
- XVII. **BYLAWS UPDATE Report, Discussion** Cindy Ramsey
  
- XVIII. **ORGANIZATIONAL STANDARDS TRAINING** Cindy Ramsey
  
- XIX. **ADJOURNMENT – Next meeting on June 25, 2026, Lassen County – Lassen County Health & Welfare Department Building – Lassen Room**

**Reasonable Accommodations**

Persons with a disability may request an agenda packet in appropriate alternative formats as required by the Americans with Disabilities Act of 1990 by contacting the Secretary of the Board at (530) 283-2466 Ext 120. All persons requiring reasonable accommodations or auxiliary aids in order to effectively participate in a meeting are encouraged to make such arrangements.

**183 West Main Street, P.O. Box 319, Quincy, CA 95971  
(530) 283-2466 Fax (530) 283-2478**

g13d

# **FAIR ADVISORY BOARD MEETING**

**TUESDAY, APRIL 14,  
2026, 5:30 PM**

**FAIR OFFICE  
195 RUSSELL AVE  
SUSANVILLE, CA**

We only use cookies that are necessary for this site to function to provide you with the best experience. The controller of this site may choose to place supplementary cookies to support additional functionality such as support analytics, and has an obligation to disclose these cookies. Learn more [about our Cookie Statement](#)

gme

Subscribe to updates



Email Address  e.g. name@e:

Share Bulletin



## Notice of Location of April 15-16, 2026 Hearing

This bulletin was sent at 04/02/2026 01:32 PM PDT

[View as a webpage / share](#)



California Fish and Game Commission  
*Wildlife Heritage and Conservation Since 1870*

### Notice of Location of April Hearing

Greetings,

The notice of intent to amend regulations regarding bear hunting was provided when the location of the April 15-16, 2026 Commission meeting had not yet been determined.

The location has been determined and the hearing for the above rulemaking will be held from the following location:

**California Natural Resources Agency Headquarters Building  
715 P Street, 2nd Floor  
Sacramento, CA 95814**

For more information, please see the [Notice of Location](#).

Sincerely,

David Haug  
Regulatory Analyst  
**California Fish and Game Commission**

Not signed up to receive our informative emails?

[Sign Up](#)

Do not reply to this message. FGC@public.govdelivery.com is for outgoing messages only.

9/3f

---

**File Code:** 1950; 2300  
**Date:** March 31, 2026

Dear Interested Party,

The Eagle Lake Ranger District (ELRD), of the Lassen National Forest (LNF) is seeking your input on the proposed Gallatin Marina Low Water Boat Ramp Enhancement Project (Project). The project is located at the south end of Eagle Lake, roughly 15 air miles northwest of Susanville, CA at the Gallatin Marina area within the Eagle Lake Recreation Area. The project is located in Township (T) 31 North (N), Range(R) 11 East (E), Sections 7 and 21, Mount Diablo Base Meridian and covers approximately 13 acres of disturbance area.

In response to lake levels dropping, the Gallatin Low Water Boat Ramp was constructed in 2011. Since that time lake levels have continued to drop, and on extremely low water years the low water ramp has become non-functional to recreationists, additionally it has proven very difficult for CA Department of Fish and Wildlife to stock fish in the lake.

In 2023, the Forest Service developed and originally scoped a proposal for a new low-water boat ramp at Pike's Point, which was posted on the Schedule of Proposed Actions as "Pike's Point Low Water Boat Launch (63887)." Public notices were published in the Lassen Times on 8/8/2023 and 9/18/2023, and public scoping occurred from 8/8/23 to 10/3/23. Numerous comments from user groups led the Forest Service to begin developing alternatives and preparing an Environmental Assessment. After additional feedback from the public and the Lassen County Board of Supervisors, the EA was cancelled on 9/30/2025, and the Forest Service is moving forward with this proposal. Tribal consultation was initiated in June 2023 with the Maidu Consortium, Pit River Tribe, Melany Johnson, Susanville Indian Rancheria, and Greenville Rancheria, with continued coordination occurring with the Susanville Indian Rancheria. The project has also been discussed at Lassen County Board of Supervisors meetings and with other interested parties.

The current proposal would include extending the existing Gallatin Low Water Boat Ramp, removing sediment around the ramp to increase available water depth to boaters, and constructing a maintenance level (ML2) road on Pike's Point for administrative use. A description of the project, including the purpose and need, the proposed action and maps, is available on the Lassen National Forest web page at: <https://usfs-public.box.com/s/lz3ifz442a7cpuq0cyyxzagm0a0d4ghd>.

Preliminary analysis suggests that this action will be categorically excluded from documentation in an environmental impact statement (EIS) or an environmental assessment (EA). The category of action applies as it has activities to enhance a developed recreation area and boat ramp. In addition, it falls within the requirements of the limitations of this category.

**7 CFR 1b.4 (d) (44) (USDA-44d-USFS)** Construction, reconstruction, decommissioning, or disposal of buildings, infrastructure, or improvements at an existing recreation site, including



infrastructure or improvements that are adjacent or connected to an existing recreation site and provide access or utilities for that site. Recreation sites include but are not limited to campgrounds and camping areas, picnic areas, day use areas, fishing sites, interpretive sites, visitor centers, trailheads, ski areas, and observation sites. Activities within this category are intended to apply to facilities located at recreation sites managed by the Forest Service and those managed by concessioners under a special use authorization. Examples include but are not limited to:

- (i) Constructing, reconstructing, or expanding a toilet or shower facility;
- (ii) Constructing or reconstructing a fishing pier, wildlife viewing platform, dock, or other constructed feature at a recreation site;
- (iii) Installing or reconstructing a water or waste disposal system;
- (iv) Constructing or reconstructing campsites;
- (v) Disposal of facilities at a recreation site;
- (vi) Constructing or reconstructing a boat landing;
- (vii) Replacing a chair lift at a ski area;
- (viii) Constructing or reconstructing a parking area or trailhead; and
- (ix) Reconstructing or expanding a recreation rental cabin.

The Forest Service is seeking your input as it relates to the proposed action and identification of any issues about the anticipated effects from this proposed action. Please respond by April 14th so your comments may be fully considered as we move through the decision-making process with this project.

Comments, written or oral, may be submitted to: Bobette Jones, District Ranger, ATTN: **Gallatin Marina Low Water Boat Ramp Enhancement Project**, 477-050 Eagle Lake Road, Susanville, CA 96130. Written comments can also be delivered between 8:00am to 4:30pm, Monday through Friday, at the Eagle Lake Ranger District Office, located at the same address. Electronic comments in acceptable plain text (.txt), rich text format (.rtf), portable document format (.pdf), or MS Word (.doc or .docx), may be submitted to: [comments-pacificsouthwest-lassen-eagle-lake@usda.gov](mailto:comments-pacificsouthwest-lassen-eagle-lake@usda.gov) using Subject: Gallatin Marina Low Water Boat Ramp Enhancement Project. Comments received in response to this solicitation, including names and addresses of those who comment, are part of the public record for this proposed action.

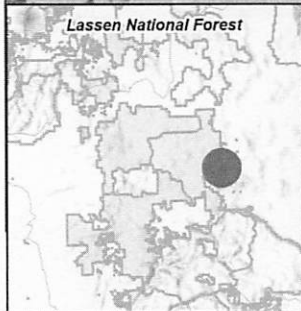
A decision regarding this proposal is expected by May 2026. Thank you for your interest and participation in the environmental analysis process on the Lassen National Forest. For more information on the project please contact Brian Newman, Project Team Leader, by phone at (530) 338-8745 or by email at [Brian.newman@usda.gov](mailto:Brian.newman@usda.gov).


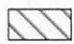
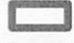
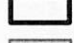
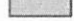
Sincerely,

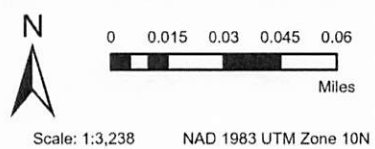
**BOBETTE JONES** Digitally signed by BOBETTE JONES  
Date: 2026.03.31 10:58:02 -07'00'

Bobette Jones  
District Ranger, Eagle Lake Ranger District  
Lassen National Forest

### Gallatin Marina Low Water Boat Ramp Enhancement



-  Potential Areas for Dredge Materials
-  Staging Areas
-  Dredging and Ramp Extension Area
-  Project Boundary
-  Proposed Road at Pike's Point



The Forest Service uses the most current and complete data available. GIS data and product accuracy may vary. They may be developed from sources of differing accuracy, accurate only at certain scales, based on modeling or interpretation, incomplete while being created or revised, etc. Using GIS products for purposes other than those for which they were created, may yield inaccurate or misleading results. The Forest Service reserves the right to correct, update, modify, or replace GIS products without notification. The Forest Service will not be liable for any activity involving this information.

# **Gallatin Marina Low Water Boat Ramp Enhancement Project Eagle Lake Ranger District, Lassen National Forest**

**Lassen County, California**

**March, 2026**

## **Introduction**

The Lassen National Forest, Eagle Lake Ranger District is proposing to improve and maintain the Gallatin Low Water Boat Ramp at Eagle Lake and construct a road with limited use at Pike's Point. The project is at the south end of Eagle Lake, roughly 15 air miles northwest of Susanville, CA with a disturbance area of approximately 13 acres. In response to lake levels dropping, the Gallatin Low Water Boat Ramp was constructed in 2011 in order to provide safe boating access to Eagle Lake. The lake level continues to frequently drop, making the low water ramp non-functional for motorized boaters during drought years.

The Forest Service is proposing to continue use of the existing ramp as long as possible with maintenance and improvements but will continue to look for other potential sites on the lake if lake levels continue to drop below safe levels for motorized boaters. In the 2014-2016, and 2021-2022 low water years, CA Department of Fish and Wildlife has faced challenges safely releasing trout into the lake. Included in this proposal is construction of a road on Pike's Point that will enable the CDFW fish truck to access deeper water for safer release of trout. Use of the maintenance level 2 (ML2) road will be restricted by a gate or other control feature, and use will be limited to Forest Service, state resources, emergency personnel and other permitted users as needed. Basic custodial care of the road would be required to protect the road investments and to see that the damage to adjacent land and resources is held to a minimum.

Eagle Lake is the second largest natural lake entirely within the state of CA. It is unique due to its high pH and alkalinity. It is a closed basin lake with only one primary tributary, Pine Creek. It is an intermittent creek which only flows 2-3 months a year. The average annual precipitation within the basin is highly variable; with an average of 18 inches per year at the lake, nearly 60 inches per year in the higher elevations to the west, and 14 inches per year in the lower elevations to the northeast. On average, Eagle Lake can lose 42 inches per year in evaporation alone (DWR 1972) and, therefore, lake level fluctuations are directly correlated with drought periods. The average annual inflow to Eagle Lake has been estimated at 48% ground water, 38% direct precipitation, and 14% surface water (BLM 2010). Pine Creek contributes 75-85% of the surface inflows to the lake. The average annual outflow has been estimated to be 89% evaporation, 10% ground water movement out of the basin and 1 % ground water pumping (BLM 2010).

## **Proposed Project Location**

The project area is located at the Gallatin Marina area within the Eagle Lake Recreation Area on the South end of Eagle Lake at approximately 5100 feet above sea level. The project is located in Township (T) 31 North (N), Range(R) 11 East (E), Section 7 and 21, Mount Diablo Base Meridian (Figure 1).

The Eagle Lake Recreation Area, at the south end of Eagle Lake, is a very popular recreational destination on the forest. Visitors can hike, bike, hunt, kayak, bird watch, paddle board, fish, and

boat. Busy times include all holiday weekends, early in the fishing season, and another surge of people in winter. The deepest water sought after by recreationists is located in the south end of the lake. The Gallatin Low Water Ramp offers the only launching facility during low water years. It is located near existing facilities such as, a marina, store, restrooms, showers and laundry facility, and parking lots.

Eagle Lake is home to the endemic Eagle Lake Rainbow Trout (ELRT), the only trout capable of surviving in the lake's alkaline water. Eagle Lake Rainbow Trout are considered a highly prized catch, and people come from all over the nation for the chance to catch the unique ELRT. Fishing season is open the Saturday preceding Memorial Day through the last day in February.

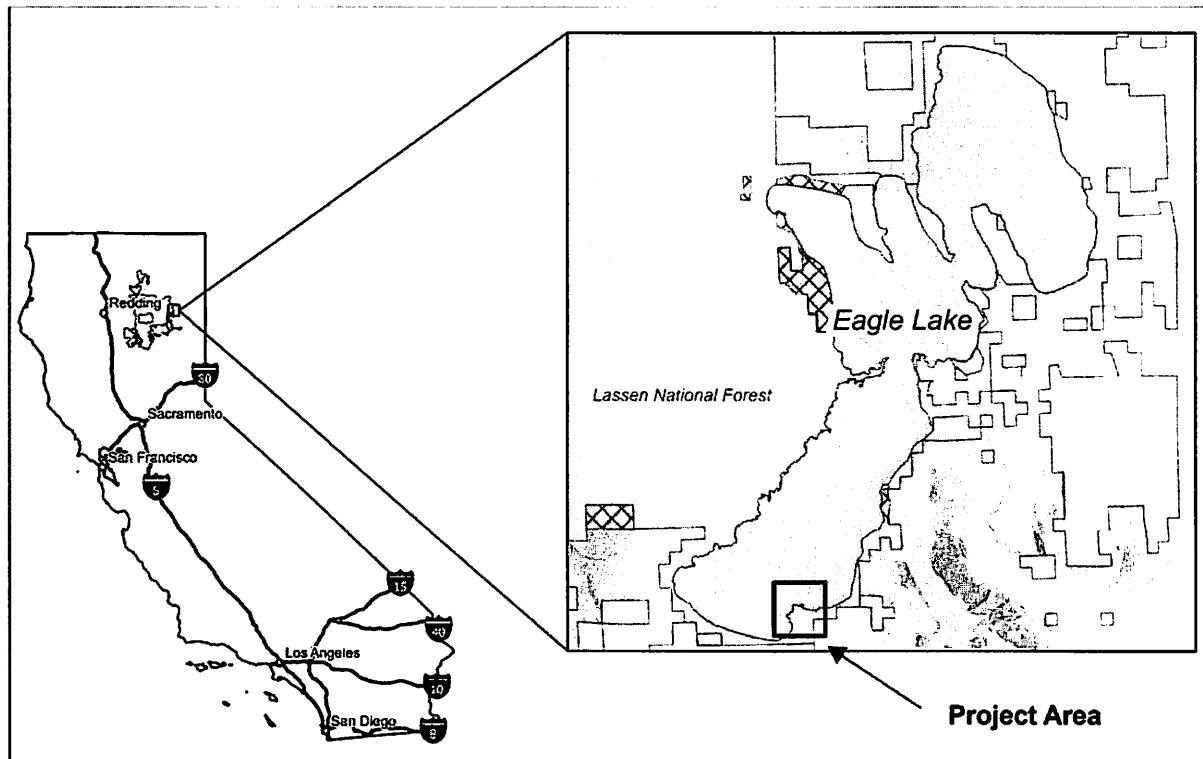


Figure 1. Vicinity Map

### **Purpose and Need**

Due to prolonged drought cycles and continually declining lake levels, the current ramp frequently becomes almost non-functional to most motorized vessels when lake levels are low. A minimum depth of 3.0 feet is needed to safely launch boats, and the current ramp is not long enough to provide ample access to deeper water. With anticipated continued weather changes, snowpack is expected to continue to decline while temperatures are expected to increase by 9° by the end of the century on the Lassen National Forest (Merriam, 2022). Given these predictions, it is highly likely we will see the lake level at Eagle Lake continue to decline. There is a need to provide safe boating access for the public and emergency personnel at Eagle Lake in years of low water levels. There is also a need to provide and maintain shoreline access to recreationists, especially fisher people because this is a highly popular place to fish at Eagle Lake and contains some of the deepest waters on all of Eagle Lake. Additionally, in order to keep the lake stocked with ELRT, there is a need to provide access to state resources for safely stocking trout in the

lake.

### **Proposed Action**

The Eagle Lake Ranger District is proposing to improve the existing Gallatin Low Water Boat Ramp by extending the existing ramp, dredging the sediment that has accumulated and deposited along the ramp, and adding an access road on Pike's Point.

The following actions are proposed:

#### **Extend Gallatin Low Water Boat Ramp**

- Extend existing ramp using materials such as a precast concrete slab approximately 20 feet wide by 5 feet long and 9 inches thick. Install beyond the current slab lower into the lake at a deeper depth. Up to two slabs will have an aggregate base of approximately 12 inches deep and will be anchored into the ground with the use of ¾ inch rebar stakes.
- Maintain the ramp as needed to provide a minimum of 3-foot depth of water for safe boat launching. The maintenance interval would be based on water depth and would vary year-to-year.

#### **Remove Excess Sediment from Ramp Area**

- Use heavy equipment to scour the sediment that has accumulated near the base of the existing ramp to create a channel with deeper water for boaters to launch their boats. The channel width would be approximately 20 feet, and length would not exceed 300 feet to provide a minimum depth of approximately 3 feet that is required for boater safety. Volume of material removed will be approximately 889 cubic yards. This amount could be less depending on water depth and depth of sediment.
- Transport the dredge materials using heavy equipment to locations on the Forest (see map) or off Forest if needed. Possible locations for areas to use the materials include nearby restoration projects for channel fill.

#### **Construct a Road at Pike's Point**

- Construct a road base-surfaced road (FS Maintenance Level 2) 10-24 feet wide. Road would extend to within 10' of the ordinary high-water mark (OHWM) on Pike's Point. Road would be for administrative use and for state resources to access deeper water for planting fish. Excavation and embankment would be used to construct the road.
- Remove approximately 5 trees as needed for construction of road. Trees would be hand-felled and piled.
- Remove or relocate exposed/loose boulders along proposed route.
- Install a gate or other control feature at the entrance to the road to limit vehicle use of the road to authorized users only.

Equipment to be used for the project will be determined by the contractor or Forest Service and approved by the Forest Service. It is anticipated that the following types of equipment would be used; graders, dredgers, loaders, excavators, dump trucks, compactors, generators, water trucks and bulldozers.

In addition to implementing Best Management Practices (BMPs) from the Water Quality Management for Forest System Lands in California, Best Management Practices (2011) and the National Best Management Practices for Water Quality Management on National Forest System Lands (2012), the following design features would be incorporated into the project to ensure that resources are protected.

**Table 1 Integrated Design Features**

<b>Resource Area</b>	<b>Integrated Design Feature</b>
Botany 1	Commercial seed mixes proposed for revegetation would be limited to native species only, would be approved by appropriate forest personnel prior to purchase and would be certified weed-free.
Botany 2	If project implementation calls for mulches or fill, they would be certified weed-free. Imported fill would be inspected for invasive plants prior to its transport to the project area.
Cultural 1	Known historic properties within the project APE will be protected using Approved Standard Protection Measures pursuant to the Regional Programmatic Agreement (RPA) Appendix E section 1.3 (1) (2).
Cultural 2	In the event that previously unknown cultural resources are discovered during project activities, all work in that area shall cease and the Lassen National Forest cultural resource staff will be notified.
Cultural 3	Monitoring by heritage program specialists may be used to enhance the effectiveness of protection measures. The results of any monitoring inspections shall be documented in cultural reports and the NRM Heritage database. An archaeologist and/or cultural monitor will be present during the implementation of any activities that will be ground disturbing if possible given cultural resource staff ability to do so.
Invasive Plants 1	All off-road equipment would be weed-free prior to entering the Forest. Staging of equipment would be done in weed-free areas
Invasive Plants 2	Known invasive species occurrences would be treated prior to implementation with herbicides as part of the Eagle Lake Weeds and Wildlife Project EA completed in 2015. Treatment would continue annually to ensure project activities do not enhance the spread of invasive species within the project area.
Invasive Plants 3	New infestations identified during project implementation would be evaluated and treated according to the species present and project constraints and avoided by project activities.
Invasive Plants 4	Post-project monitoring for implementation and effectiveness of weed treatments and control of new infestations would be conducted as soon as possible and for a period of multiple years after completion of the project.
Soil 1	Soil quality standards and appropriate Best Management Practices (BMP) that protect forest soils would be implemented for the entire project. BMPs are described in Water Quality Management for Forest System Lands in California, Best Management Practices (2011), LNF LRMP (1993), and the 2004 SNFPA ROD.
Water Quality 1	Implement National Core BMPs. All proposed activities will adhere to the National Best Management Practices for Water Quality Management on National Forest System Lands (USDA Forest Service 2012). Reference Appendix A for specific BMPS.
Wildlife 1	Adhere to an LOP from February 15 through September 15 in unsurveyed goshawk nesting habitat and when treatment areas are within 0.25 miles of existing northern goshawk Protected Activity Centers (PACs), This LOP may be waived if non-nesting is documented.
Wildlife 2	Adhere to LOP prohibiting actions within approximately 0.25 miles of known bald

	eagle nest trees during the breeding season (January 31 through August 31). This LOP may be waived if non-nesting is documented.
Wildlife 3	Adhere to LOP prohibiting actions within 1/8 miles of any known osprey nest tree during the breeding season (March 1 through August 31). This LOP may be waived if non-nesting is documented.
Aquatic 1	A project Spill Prevention Control and Countermeasure Plan (SPCC Plan or herein "Spill Plan") will be provided to the Forest Service by the contractor prior to commencement of any project work.
Aquatic 2	Any construction occurring within 5 feet of the ordinary high-water mark will be limited to a 60-day work window from October – November.
Aquatic 3	Visual observations /survey of fish species present in work area will be completed by a qualified specialist prior to commencement of in-water work.
Aquatic 4	Placement of a silt-curtain to minimize suspended sediment drift beyond the active dredge site will be deployed (and remain in place) during all phases of work occurring within 5 feet of the ordinary high-water mark during project activities.
Aquatic 5	Placement of an absorbent oil boom to control and minimize surface–water contamination will be deployed (and remain in place) during all phases of in-water work.
Aquatic 6	All concrete must be precast (and cured) before entering any waterbody associated with this project.
Aquatic 7	Equipment and supplies will be staged outside of the RCA in designated staging areas identified by the Forest Service.
Aquatic 8	An equipment fueling area will be identified by the Forest Service outside of the RCA and adjacent to the equipment staging area prior to commencement of work.
Aquatic 9	Ensure all equipment operated in or adjacent to the waterbody is clean of aquatic invasive species, as well as oil and grease, and is well maintained.
Engineering 1	If imported fill is required, it will be free from detrimental quantities of organic materials and free of all debris, mud, and other unsuitable materials.
Engineering 2	All embankment work will occur above the Ordinary High-Water Mark (OHWM), and virtually all excavation will occur below the OHWM.

## Appendix A

Best Management Practices for Water Quality Management on National Forest System Lands. The following is a table of the most relevant best management practices; they are not repeated in full here and are incorporated by reference.

AqEco-1	AqEco1 - Aquatic Ecosystem Improvement and Restoration Planning.
AqEco-2	Operations in Aquatic Ecosystems
AqEco-3	Ponds and Wetlands
Fac-7	Vehicle and Equipment Wash Water
Rec-8	Watercraft Launches.
Road-3	Road Construction and Reconstruction
Road-10	Equipment Refueling and Servicing
Veg-2	Erosion Prevention and Control.

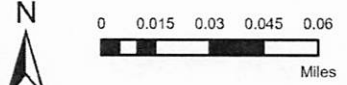
This proposed action was approved by District Ranger, Bobette Jones on 3/13/26



### Gallatin Marina Low Water Boat Ramp Enhancement



- Potential Areas for Dredge Materials
- Staging Areas
- Dredging and Ramp Extension Area
- Project Boundary
- Proposed Road at Pike's Point



Scale: 1:3,238 NAD 1983 UTM Zone 10N

The Forest Service uses the most current and complete data available. GIS data and product accuracy may vary. They may be developed from sources of differing accuracy, accurate only at certain scales, based on modeling or interpretation, incomplete while being created or revised, etc. Using GIS products for purposes other than those for which they were created, may yield inaccurate or misleading results. The Forest Service reserves the right to correct, update, modify, or replace GIS products without notification. The Forest Service will not be liable for any activity involving this information.

9139



**Lassen LAFCO Agenda - 4.13.26**

**AGENDA**

**Regular Meeting**

**April 13, 2026 03:00 PM**

**66 North Lassen St, Susanville, CA 96130**

<https://www.lassenlafco.org/>

**Commissioners**

Chair, Public Member Todd Eid • Vice Chair, City Member Mendy Schuster • City Member Dawn Miller • County Member Tom Neely • County Member Mike Scanlan • County Member Alternate Gary Bridges • City Member Alternate Russ Brown • Chris Gallagher Public Member Alternate

**LAFCO Staff**

Executive Officer Jennifer Stephenson • Clerk Ruth McElrath • LAFCO Counsel John Kenny

**RULES AND PROCEDURES OF THIS COMMISSION**

You may use your computer or smart device to watch the video conference by downloading the Zoom iCloud Conference app or on the Zoom website, or you may dial in with your phone for audio only. See below for instructions on how to join.

The Commission welcomes you to its meetings which are regularly scheduled for the second Monday of every even numbered month at 3:00 p.m. Your interest and participation is encouraged and welcome.

As a courtesy the LAFCO meeting is also accessible to the public via live streaming at:

<https://us02web.zoom.us/j/83831966039?pwd=5BOBntVDXl5nfy4EQQDNE3tWWtbiiG.1>

or by phone at: Phone Number: (669)900-9128 Meeting ID: 838 3196 6039 Passcode: 237482

Online and telephonic access does not guarantee the public the ability to observe the meeting in the event there is a disruption or connectivity issues that affect broadcasting. Members of the public who want to be assured that they have the ability to observe the meeting and make comment during the meeting, should attend the meeting in-person.

If you have any problems joining the meeting, please call LAFCO at (310)936-2639.

**REASONABLE ACCOMMODATIONS**

An interpreter for the hearing-impaired may be made available upon request to the Executive Officer 72 hours before a meeting.

The location of this meeting is wheelchair-accessible. If other accommodations are required to assist a person with a disability to participate in the meeting, please contact the Executive Officer 24 hours before the meeting at (310)936-2639.

Disclosure & Disqualification Requirements Any person or group of persons acting in concert who

directly or indirectly contribute \$1,000 or more in support of or in opposition to a change of organization or reorganization that has been submitted to Plumas LAFCO must comply with the disclosure requirements of the Political Reform Act of 1974 applicable to local initiative measures to be submitted to the electorate. These requirements contain provisions for making disclosures of contributions and expenditures at specified intervals; they may be reviewed at Government Code §§56700.1 and 81000 et seq. Additional information about the requirements pertaining to local initiative measures to be presented to the electorate can be obtained by calling the Fair Political Practices Commission at (916) 322-5660.

A LAFCO Commissioner must disqualify herself or himself from voting on an application involving an "entitlement for use" (such as an annexation or sphere amendment) if, within the last twelve months, the Commissioner has received \$250 or more in campaign contributions from the applicant, any financially interested person who actively supports or opposes the application, or an agency (such as an attorney, engineer, or planning consultant) representing the applicant or an interested party. The law (Government Code Section 84308) also requires any applicant or other participant in a LAFCO proceeding to disclose the contribution amount and name of the recipient Commissioner on the official record of the proceeding.

Contact LAFCO staff

LAFCO staff may be contacted at (310)936-2639 or by email at [jennifer@pcateam.com](mailto:jennifer@pcateam.com) . Copies of reports are located on the LAFCO webpage at:[www.lassenlafco.org](http://www.lassenlafco.org)

## 1. Call to Order

- A. Roll Call
- B. Pledge of Allegiance

## 2. Approval of Agenda (Additions and Deletions)

Discussion  Possible Action  [Comment](#)

## 3. Correspondence

Discussion  Possible Action  [Comment](#) [View Item](#)

- A. Cure and Correct Letter March 11, 2026 and LAFCo Response

## 4. Approval of Minutes

Discussion  Possible Action  [Comment](#) [View Item](#)

- A. Approval of the February 9, 2026 LAFCo minutes

## 5. Authorize payment of claims

Discussion  Possible Action  [Comment](#) [View Item](#)

- A. Authorize payment of claims for February 2026 and March 2026 and transfer of Contingency funds to Legal Counsel and MSR funds.

## 6. Public Comments

Discussion  [Comment](#)

This is the time set aside for citizens to address the Commission on any item of interest to the public that is within the subject matter jurisdiction of the Commission. For items that are on the agenda, public comment will be heard when the item is discussed. If your comments concern an item that is noted as a public hearing, please address the Commission after the public hearing is opened for public testimony. The Chairman reserves the right to limit each speaker to three (3) minutes. Please understand that by law, the Commission cannot make decisions on matters not on the agenda

**7. Seating Special Districts on LAFCo**

Discussion  [Comment](#)

A. Update on status of special district invitation to join LAFCo

**8. File 2026-01: Oring OASA to Susanville and Susanville SD**

Discussion  Possible Action  [Comment](#) [View Item](#)

Consider delegating approval power to the Executive Officer on a one time basis in anticipation of application immediately following the LAFCo meeting or call a special meeting to consider approval.

A. Receive Staff Report

B. Provide direction to staff to either process the OASA as delegated in the policies and procedures or call a special meeting to consider approval.

**9. Little Valley CSD MSR**

Discussion  Possible Action  [Comment](#) [View Item](#)

Little Valley CSD MSR for Adoption

A. Receive presentation on Little Valley CSD MSR

B. Consider adoption of Resolution 2026-01 adopting MSR determinations and SOI Update

**10. Proposed Budget for FY 26-27**

Discussion  Possible Action  [Comment](#) [View Item](#)

A. Receive staff report for proposed budget for FY 26-27

B. Consider Resolution 2026-02 adopting the proposed budget for FY 26-27

**11. Executive Officer Report**

Discussion  [Comment](#)

A. Policy and Bylaws Updates

**12. Commissioner Reports**

Discussion  [Comment](#)

**13. Adjournment**

Adjourn to the next regular meeting on June 8, 2026.

9/13/26

**LASSEN COUNTY BEHAVIORAL HEALTH  
ADVISORY BOARD MEETING**

**April 13, 2026**

555 Hospital Lane

Susanville, Ca 96130

5:30PM

**AGENDA**

1. Call to Order
2. Approval of the Agenda – Action
3. Approval of the Minutes –March 2026
4. Public Comment\* - Information
5. Department Report
  - a. Mobile Crisis Unit
  - b. Care Court
  - c. Cal-Aim/Path Grant
  - d. Partnership – DMC-ODS
6. Cultural Competence
7. Housing
8. Judy's House
9. Board Report
  - a. Board Recruitment
10. Lassen Community College
11. Veteran's Affairs
12. Suicide Prevention/Public Health
13. Susanville Police Department
14. Lassen County Sheriff's Department
15. Consideration of Future Agenda Items
16. Next Meeting Date and Time
17. Adjournment

- \* Any person desiring to address the Board shall first secure permission of the presiding officer.
- \* Speaker cards are provided so that individuals can bring to the attention of the presiding officer their desire to speak on a particular agenda item. Cards are available on the table by the door and shall be completed and presented to the Secretary in advance of speaking.
- \* Matters under the jurisdiction of the Board, and not on the agenda, may be addressed by the Public at the time provided in the Agenda under Public Comment. The Board limits testimony on those items to three minutes per person and no more than three individuals shall address the same subject.

gibi



# PSA 2 Area Agency on Aging

## ADVISORY COUNCIL VIRTUAL MEETING

Friday, March 27, 2026  
10:00 a.m.

### AGENDA

Serving

Seniors

In

Lassen,

Modoc,

Shasta,

Siskiyou,

&

Trinity

Counties

Nancy Ogren  
Chairman,  
PSA 2 Executive Board

Mike Cottone  
Chairman,  
PSA 2 Advisory Council

Teri Gabriel  
Executive Director  
PSA 2 AAA

- A. 10:00 - Call to Order & Flag Salute – Mike Cottone, Chairman
- B. 10:02 - Roll Call (Establishment of a quorum)
- C. 10:05 - Introduction of Guests
- D. 10:10 - Approval of Agenda (Changes / Additions)\*
- E. 10:15 - Approval of Virtual Meeting Minutes\* – January 30, 2026
- F. 10:20 – OPEN SESSION / ANNOUNCEMENTS  
(Opportunity to hear comments from the community and for announcements – 3-minute limit)

#### G. 10:30 - REPORTS:

##### Chairman's Report- Mike Cottone, Chairman

- Update on Advisory Council Membership / Recruitment

##### Triple A Council of CA (TACC) Report – Mike Cottone, Chairman

- No Report

##### California Senior Legislature (CSL) Report – Nancy Quirus, Senior Assemblymember and Teri Gabriel, Executive Director

- CSL Update & Elections Process

##### Nutrition Report – Michelle Harris, MS RD & Lydia Gil

- Nutrition & Healthy Living Opportunities

##### Mental / Behavioral Health Services Report - All

- Update on County Mental / Behavioral Health Services

##### Food Access Report – Staci Wadley, Vice-Chairman

- Update on Food Bank and Food Access Activity

**11:20 – BREAK**

**Director's Report** – Teri Gabriel, Executive Director

- FY 26/27 Area Plan Update and Public Hearing Process
- Update on Master Plan for Aging Activity
- Other Agency Activity

**H. 11:35 – Nominations and Election of Interim Secretary\***

**I. 11:40 - Discussion on FY 25/26 Area Plan Goals & Objectives Activities**

- Activity Updates from Advisory Council Members

**J. 11:45 – Approval of FY 26/27 Proposed Area Plan Objectives\***

**K. 11:50 – Recruit Ad hoc Committee for Year End Report to Executive Board**

**L. 11:55 - Correspondence:**

Incoming: Resignation Message from Michelle Harris, MS RD  
Resignation Message from Elizabeth Ritz

Outgoing: None

**M. 12:00 - Adjournment**

**Attachments:**

Virtual Meeting Minutes – January 30, 2026  
Advisory Council Member Roster  
Executive Board Member Roster  
Resignation Message from Michelle Harris, MS RD  
Resignation Message from Elizabeth Ritz  
CA Senior Legislature Update – March 2026  
FY 25/26 Area Plan Goals and Objectives  
Proposed FY 26/27 Area Plan Goals and Objectives  
Older Adults Around the Table Flyer  
Advisory Council Activity Report Form  
Advisory Council Successes & Challenges in Senior Services Report

**\* Indicates Possible Action to be taken**

Any new items not on the agenda shall become a matter of new business to be brought forward for consideration by the Advisory Council at the next scheduled meeting, unless declared an item which would necessitate emergency action.

**NEXT SCHEDULED MEETING:**

Advisory Council Virtual Meeting  
Friday, April 24, 2026